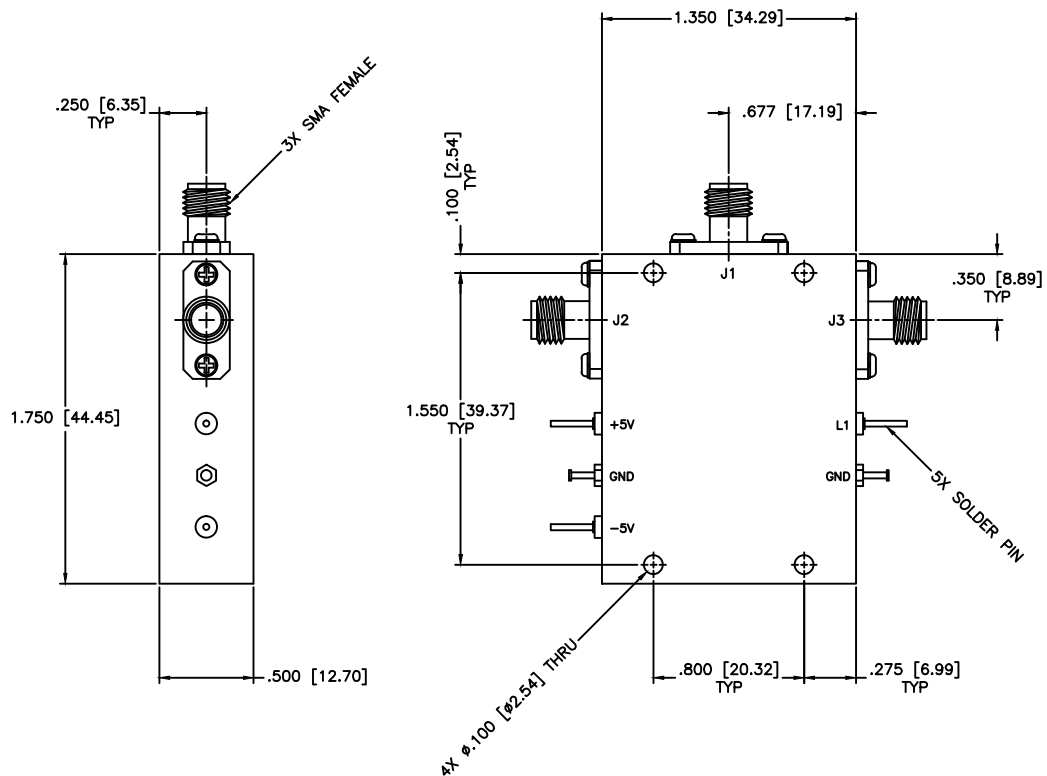


REVISIONS				
ZONE	REV	DESCRIPTION	Date	APPROVED



SPECIFICATIONS

FREQUENCY RANGE: 20–1200 MHz
 INSERTION LOSS: 1.5dB Max.
 ISOLATION: 70dB Min.
 VSWR: 1.50:1 Max.
 RF INPUT POWER: 200mW Max.
 SWITCHING SPEED: 100nSec Typ.

VOLTAGE/CURRENT REQUIRED

+5Vdc @ +100mA, Typical
 -5Vdc @ -70mA, Typical

TTL CONTROL LOGIC

LOGIC "0" (-0.3V to +0.8V)=ON
 LOGIC "1" (+2V to +5V)=OFF

L1	IN-J1	IN-J2
1	Isolation	Insertion Loss
0	Insertion Loss	Isolation

MATERIAL:	
DRAWN:	DATE:
Pai boon Luekhamhan	07-24-2006
APPROVED:	DATE:
T. Nguyen	07-24-2006

MCLI MICROWAVE COMMUNICATIONS LABORATORIES INC. 7255 30TH AVE. N. SAINT PETERSBURG, FL 33710 TEL: (727) 344-6254 FAX: (727) 381-6116 http://WWW.MCLI.COM	SCALE:	N/A
	SHEET:	N/A
UNLESS OTHERWISE SPECIFIED: TOLERANCES IN (INCHES) OR [mm] (MILLIMETERS) FRACTIONS: ± 1/64 DECIMALS: ±.02 ±.008 ANGLE: ±1/2°	DRAWING TITLE: PIN DIODE SWITCHES	
PROPRIETARY NOTICE: THE INFORMATION IN THIS DRAWING IS PROPRIETARY AND SHALL NOT BE USED OR DISCLOSED WITHOUT WRITTEN PERMISSION FROM MICROWAVE COMMUNICATIONS LABORATORIES INC. (MCLI)	PART NO.: D2-29/ABS	
THIRD ANGLE PROJECTION	CAGE CODE:	DWG. NO.
	OD2L5	82177
	SIZE: N/A	REV: N/A
	DO NOT SCALE THE DRAWING	