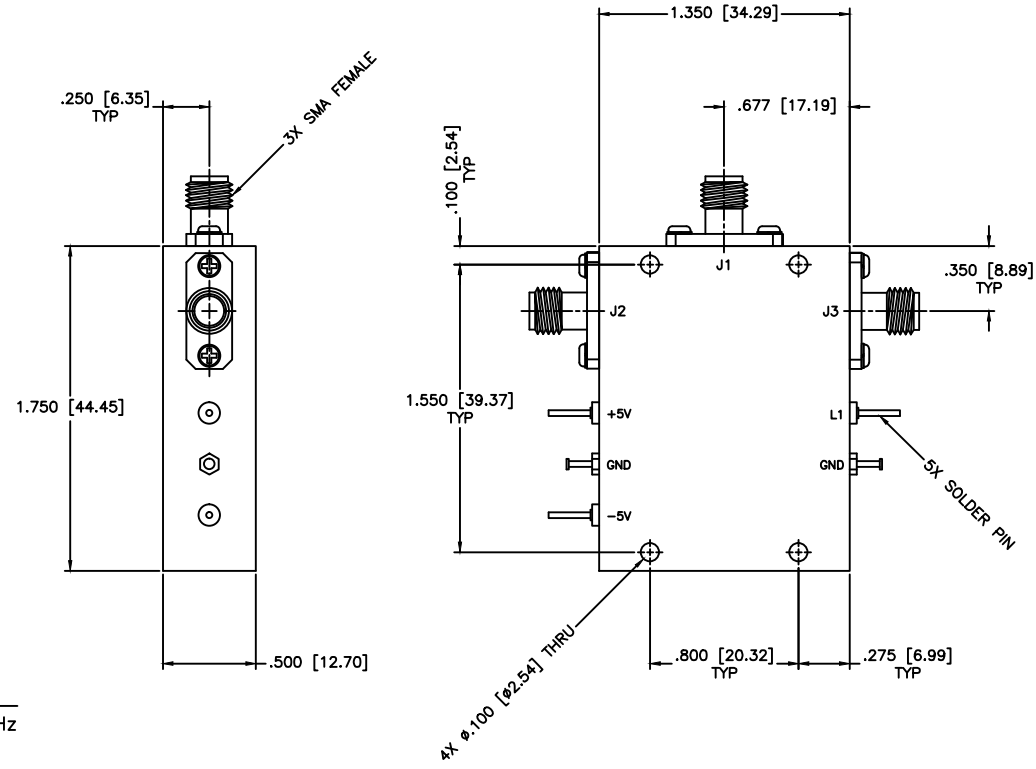




REVISIONS				
ZONE	REV	DESCRIPTION	Date	APPROVED



SPECIFICATIONS

Frequency Range: 0.3–18.0 GHz
 Switch Type: SP2T
 Isolation: 60dB min
 Insertion Loss: 2.8dB max
 VSWR: 2.00:1 Max.
 Input Power: 200mW (23dBm)
 Switching Time: 100 (nSec)
 Driver: Schottkey TTL
 Voltage/Current Required: ± 5 Vdc @ ± 30 mA, Typical
 Individual TTL Control Logic: Logic "0" (-0.3V to +0.8V) = ON
 Logic "1" (+2.0V to +5.0V) = OFF

TTL Control Logic

L1	IN-J1	IN-J2
0	Isolation	Insertion Loss
1	Insertion Loss	Isolation

MATERIAL:		MICROWAVE COMMUNICATIONS LABORATORIES INC. 7255 30TH AVE. N. SAINT PETERSBURG, FL 33710 TEL: (727) 344-6254 FAX: (727) 381-6116 http://WWW.MCLI.COM		SCALE:	N/A
				SHEET:	N/A
UNLESS OTHERWISE SPECIFIED: TOLERANCES IN (INCHES) OR [mm] (MILLIMETERS) FRACTIONS: $\pm 1/64$ DECIMALS: $\pm 0.01 \pm 0.005$ ANGLE: $\pm 1/2^\circ$		DRAWING TITLE:			
		PIN DIODE SWITCHES, ABORPTIVE			
DRAWN:		DATE:		PART NO.:	
Paiboon Luekhamhan		03-24-2009		D2-25/ABS	
APPROVED:		DATE:		CAGE CODE:	SIZE: N/A
T. Nguyen		03-24-2009		0D2L5	REV: N/A
		THIRD ANGLE PROJECTION		DWG NO. 84344	
DO NOT SCALE THE DRAWING					

