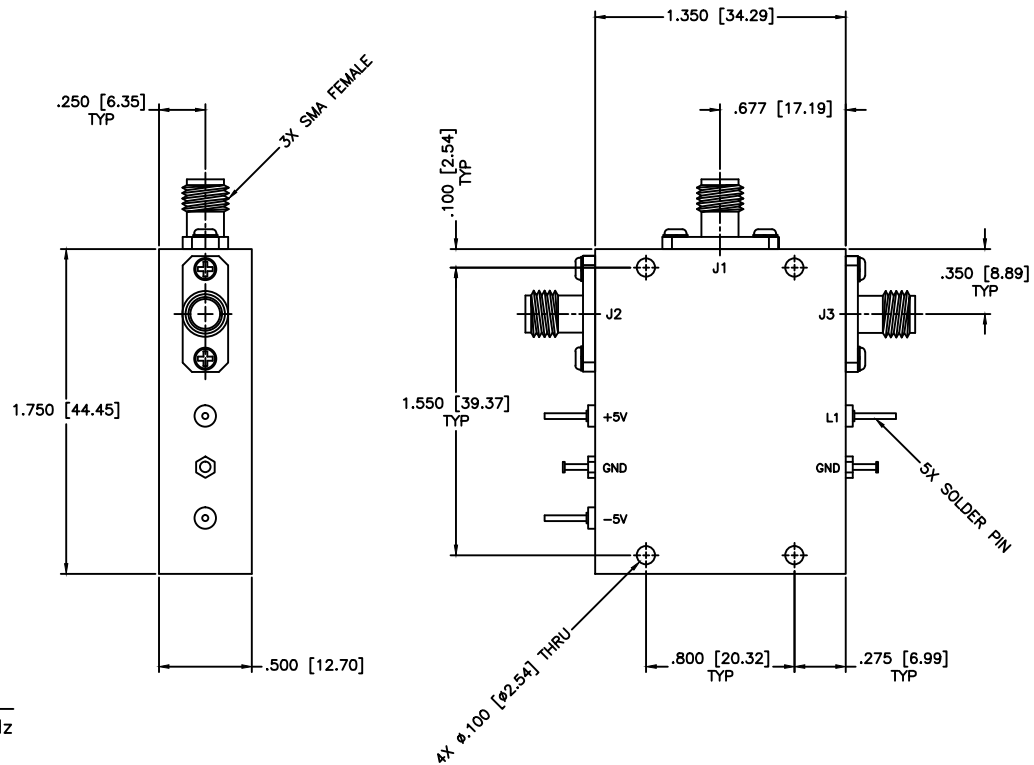


REVISIONS				
ZONE	REV	DESCRIPTION	Date	APPROVED



SPECIFICATIONS

Frequency Range: 0.3–16.0 GHz
 Switch Type: SP2T
 Isolation: 55dB min
 Insertion Loss: 3.2dB max
 VSWR: 1.70:1 Max.
 Input Power: 200mW (23dBm)
 Switching Time: 100 (nSec)
 Driver: Schottkey TTL
 Voltage/Current Required: ±5 Vdc @ ±30 mA, Typical
 Individual TTL Control Logic: Logic "0" (-0.3V to +0.8V) = ON
 Logic "1" (+2.0V to +5.0V) = OFF

TTL Control Logic			
L1	IN-J1	IN-J2	
0	Isolation	Insertion Loss	
1	Insertion Loss	Isolation	

MATERIAL:		MICROWAVE COMMUNICATIONS LABORATORIES INC. 7255 30TH AVE. N. SAINT PETERSBURG, FL 33710 TEL: (727) 344-6254 FAX: (727) 381-6116 http://WWW.MCLI.COM		SCALE:	N/A
DRAWN:				UNLESS OTHERWISE SPECIFIED: TOLERANCES IN (INCHES) OR [mm] (MILLIMETERS) FRACTIONS: ± 1/64 DECIMALS: ±.01 ±.005 ANGLE: ±1/2°	SHEET:
DATE:		DRAWING TITLE:		PART NO.	
02-01-2007		PIN DIODE SWITCHES, ABPROPTIVE		D2-22/ABS	
APPROVED:		CAGE CODE:		SIZE:	REV:
T. Nguyen		0D2L5		N/A	N/A
DATE:		DWG NO.:		DO NOT SCALE THE DRAWING	
02-01-2007		82765			