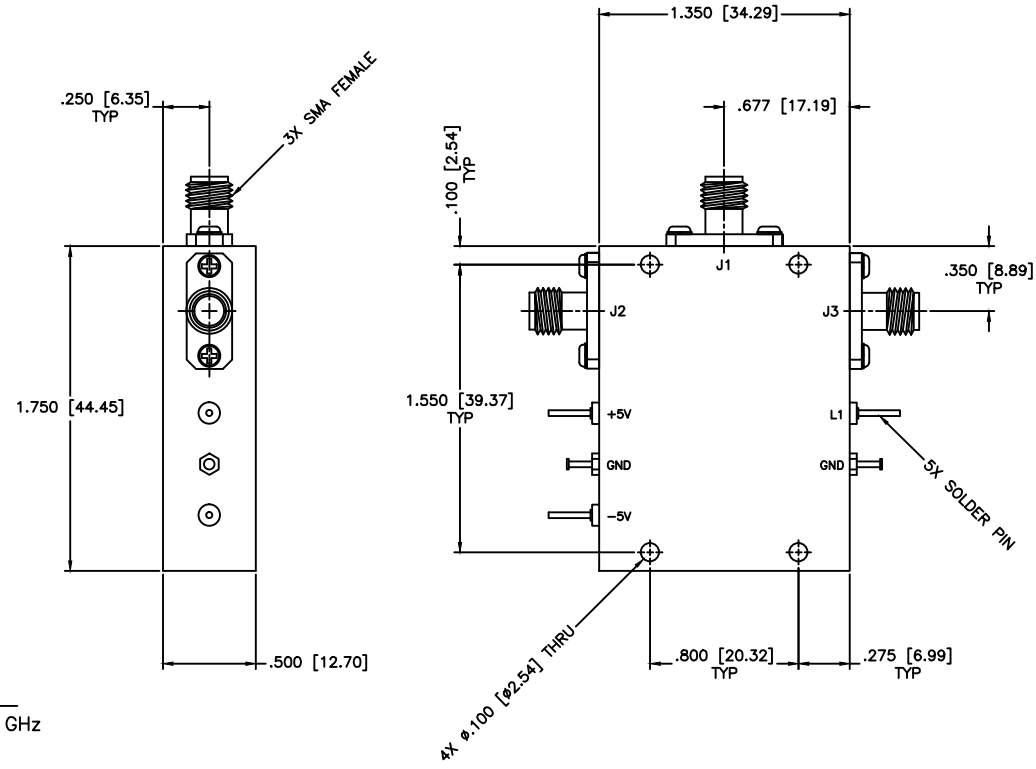




REVISIONS				
ZONE	REV	DESCRIPTION	Date	APPROVED



SPECIFICATIONS

Frequency Range: 0.225–0.40 GHz
 Switch Type: SP2T
 Isolation: 60dB min
 Insertion Loss: 1.0dB max
 VSWR: 1.65:1 Max.
 Input Power: 200mW (23dBm)
 Switching Time: 100 (nSec)
 Driver: Schottkey TTL
 Voltage/Current Required: ± 5 Vdc @ ± 30 mA, Typical
 Individual TTL Control Logic: Logic "0" (-0.3V to +0.8V) = ON
 Logic "1" (+2.0V to +5.0V) = OFF

TTL Control Logic

L1	IN-J1	IN-J2
0	Isolation	Insertion Loss
1	Insertion Loss	Isolation

MATERIAL:		MICROWAVE COMMUNICATIONS LABORATORIES INC. 7255 30TH AVE. N. SAINT PETERSBURG, FL 33710 TEL: (727) 344-6254 FAX: (727) 381-6116 http://WWW.MCLI.COM		SCALE:	N/A
UNLESS OTHERWISE SPECIFIED: TOLERANCES IN (INCHES) OR [mm] (MILLIMETERS) FRACTIONS: $\pm 1/64$ DECIMALS: $\pm 0.01 \pm 0.005$ ANGLE: $\pm 1/2^\circ$				SHEET:	N/A
		DRAWING TITLE:		PIN DIODE SWITCHES, ABORPTIVE	
DRAWN:		DATE:		PART NO.:	
Paiboon Luekhamhan		02-03-2009		D2-1/ABS	
APPROVED:		DATE:		CAGE CODE:	SIZE: A
T. Nguyen		02-03-2009		OD2L5	REV: N/A
		PROPRIETARY NOTICE: THE INFORMATION IN THIS DRAWING IS PROPRIETARY AND SHALL NOT BE USED OR DISCLOSED WITHOUT WRITTEN PERMISSION FROM MICROWAVE COMMUNICATIONS LABORATORIES INC. (MCLI)		DWG NO.:	84112
		THIRD ANGLE PROJECTION		DO NOT SCALE THE DRAWING	

