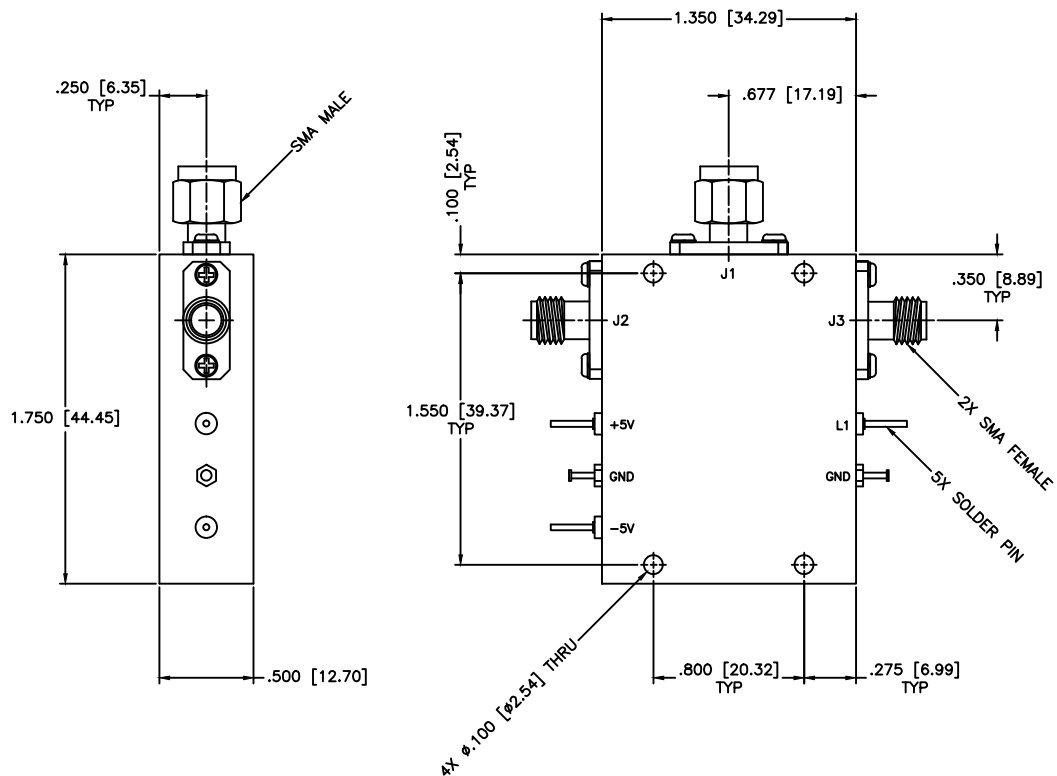


REVISIONS				
ZONE	REV	DESCRIPTION	Date	APPROVED



**SPECIFICATIONS**

Frequency Range: 0.3–18.0 GHz  
 Switch Type: SP2T  
 Isolation: 60dB min  
 Insertion Loss: 2.8dB max  
 VSWR: 2.00:1 Max.  
 Input Power: 200mW (23dBm)  
 Switching Time: 100 (nSec)  
 Driver: Schottkey TTL  
 Voltage/Current Required:  $\pm 5$  Vdc @ -70, +100mA, Typical  
 Individual TTL Control Logic: Logic "0" (-0.3V to +0.8V) = ON  
 Logic "1" (+2.0V to +5.0V) = OFF

TTL Control Logic  
 L1 J1–J2  
 0 Insertion Loss  
 1 Isolation

MATERIAL:		<b>MCLI</b> MICROWAVE COMMUNICATIONS LABORATORIES INC. 7255 30TH AVE. N. SAINT PETERSBURG, FL 33710 TEL: (727) 344-6254 FAX: (727) 381-6116 <a href="http://WWW.MCLI.COM">http://WWW.MCLI.COM</a>	SCALE:	N/A
			SHEET:	N/A
UNLESS OTHERWISE SPECIFIED: TOLERANCES IN (INCHES) OR [mm] (MILLIMETERS) FRACTIONS: $\pm 1/64$ DECIMALS: $\pm .02 \pm .008$ ANGLE: $\pm 1/2^\circ$		DRAWING TITLE: PIN DIODE SWITCHES, REFLECTIVE		
DRAWN: Paiboon Luekhamhan		PART NO. D2-13/REF/SMI		
DATE: 01-15-2007		CAGE CODE: OD2L5		
APPROVED: T. Nguyen		DATE: 01-15-2007		
PROPRIETARY NOTICE: THE INFORMATION IN THIS DRAWING IS PROPRIETARY AND SHALL NOT BE USED OR DISCLOSED WITHOUT WRITTEN PERMISSION FROM MICROWAVE COMMUNICATIONS LABORATORIES INC. (MCLI)		SIZE: A	REV: N/A	DWG. NO. 82775
THIRD ANGLE PROJECTION		DO NOT SCALE THE DRAWING		