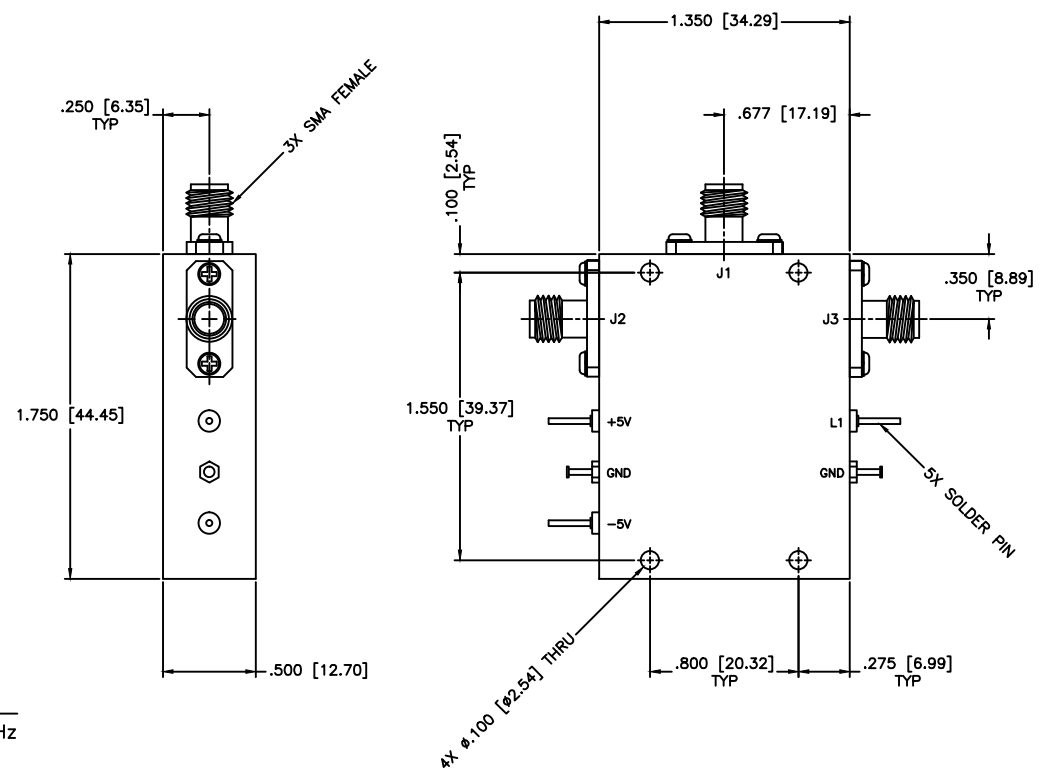


REVISIONS				
ZONE	REV	DESCRIPTION	Date	APPROVED



**SPECIFICATIONS**

Frequency Range: 5.8–6.45 GHz  
 Switch Type: SP2T  
 Isolation: 55dB min  
 Insertion Loss: 1.3dB max  
 VSWR: 1.70:1 Max.  
 Input Power: 200mW (23dBm)  
 Switching Time: 100 (nSec)  
 Driver: Schottkey TTL  
 Voltage/Current Required:  $\pm 5$  Vdc @  $\pm 30$  mA, Typical  
 Individual TTL Control Logic: Logic "0" (-0.3V to +0.8V) = ON  
 Logic "1" (+2.0V to +5.0V) = OFF

TTL Control Logic	
L1 IN-J1	IN-J2
0 Isolation	Insertion Loss
1 Insertion Loss	Isolation

MATERIAL:		MICROWAVE COMMUNICATIONS LABORATORIES INC. 7255 30TH AVE. N. SAINT PETERSBURG, FL 33710 TEL: (727) 344-6254 FAX: (727) 381-6116 http://WWW.MCLI.COM		SCALE:	N/A
UNLESS OTHERWISE SPECIFIED: TOLERANCES IN (INCHES) OR [mm] (MILLIMETERS) FRACTIONS: $\pm 1/64$ DECIMALS: $\pm .01 \pm .005$ ANGLE: $\pm 1/2^\circ$				SHEET:	N/A
		DRAWING TITLE:		PIN DIODE SWITCHES, ABORPTIVE	
DRAWN:		DATE:		PART NO.:	
Paiboon Luekhamhan		02-03-2009		D2-12/ABS	
APPROVED:		DATE:		CAGE CODE:	SIZE: A
T. Nguyen		02-03-2009		OD2L5	REV: N/A
THIRD ANGLE PROJECTION 		DWG NO.: 84116 DO NOT SCALE THE DRAWING			