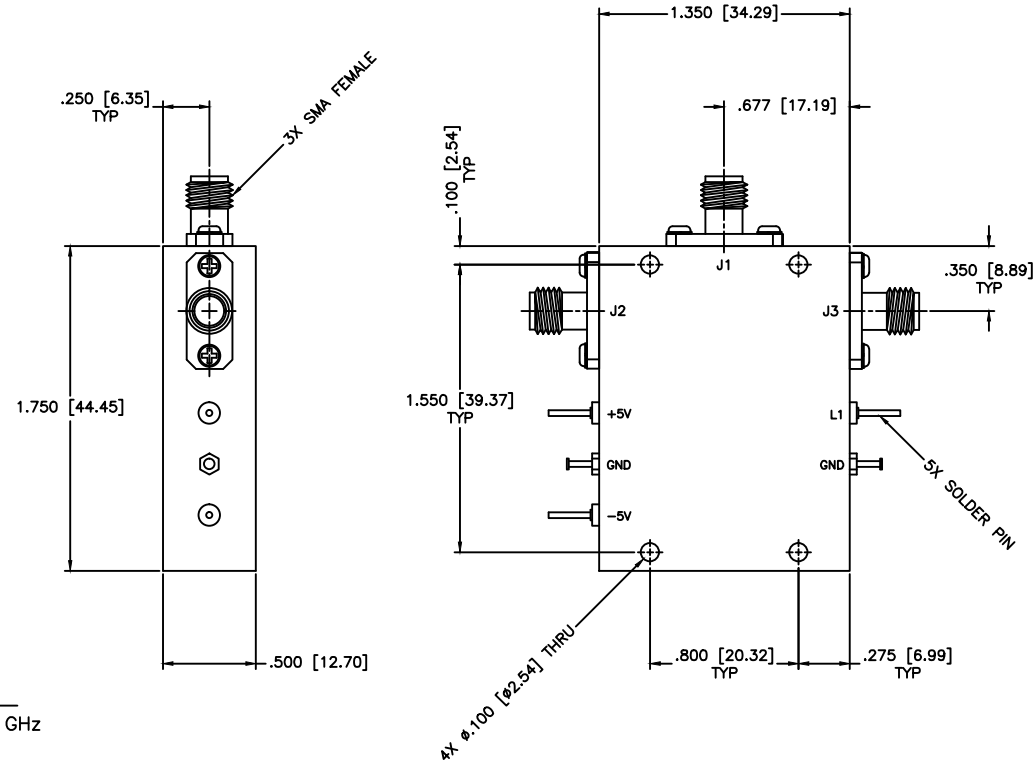




REVISIONS				
ZONE	REV	DESCRIPTION	Date	APPROVED



SPECIFICATIONS

Frequency Range: 3.625–4.25 GHz
 Switch Type: SP2T
 Isolation: 60dB min
 Insertion Loss: 1.0dB max
 VSWR: 1.60:1 Max.
 Input Power: 200mW (23dBm)
 Switching Time: 100 (nSec)
 Driver: Schottkey TTL

Voltage/Current Required: ±5 Vdc @ ±30 mA, Typical
 Individual TTL Control Logic: Logic "0" (-0.3V to +0.8V) = ON
 Logic "1" (+2.0V to +5.0V) = OFF

TTL Control Logic

L1	IN-J1	IN-J2
0	Isolation	Insertion Loss
1	Insertion Loss	Isolation

MATERIAL:			MICROWAVE COMMUNICATIONS LABORATORIES INC. 7255 30TH AVE. N. SAINT PETERSBURG, FL 33710 TEL: (727) 344-6254 FAX: (727) 381-6116 http://www.MCLI.com		SCALE: N/A
UNLESS OTHERWISE SPECIFIED: TOLERANCES IN (INCHES) OR [mm] (MILLIMETERS) FRACTIONS: ± 1/64 DECIMALS: ±.01 ±.005 ANGLE: ±1/2°			DRAWING TITLE: PIN DIODE SWITCHES, REFLECTIVE		SHEET: N/A
DRAWN: Paiboon Luekhamhan		DATE: 08-28-2013		PART NO. D2-10/REF	
APPROVED: T. Nguyen		DATE: 08-28-2013		CAGE CODE: OD2L5	SIZE: A
		PROPRIETARY NOTICE: THE INFORMATION IN THIS DRAWING IS PROPRIETARY AND SHALL NOT BE USED OR DISCLOSED WITHOUT WRITTEN PERMISSION FROM MICROWAVE COMMUNICATIONS LABORATORIES INC. (MCLI) THIRD ANGLE PROJECTION		REV: N/A	DWG NO. 86377
				DO NOT SCALE THE DRAWING	

