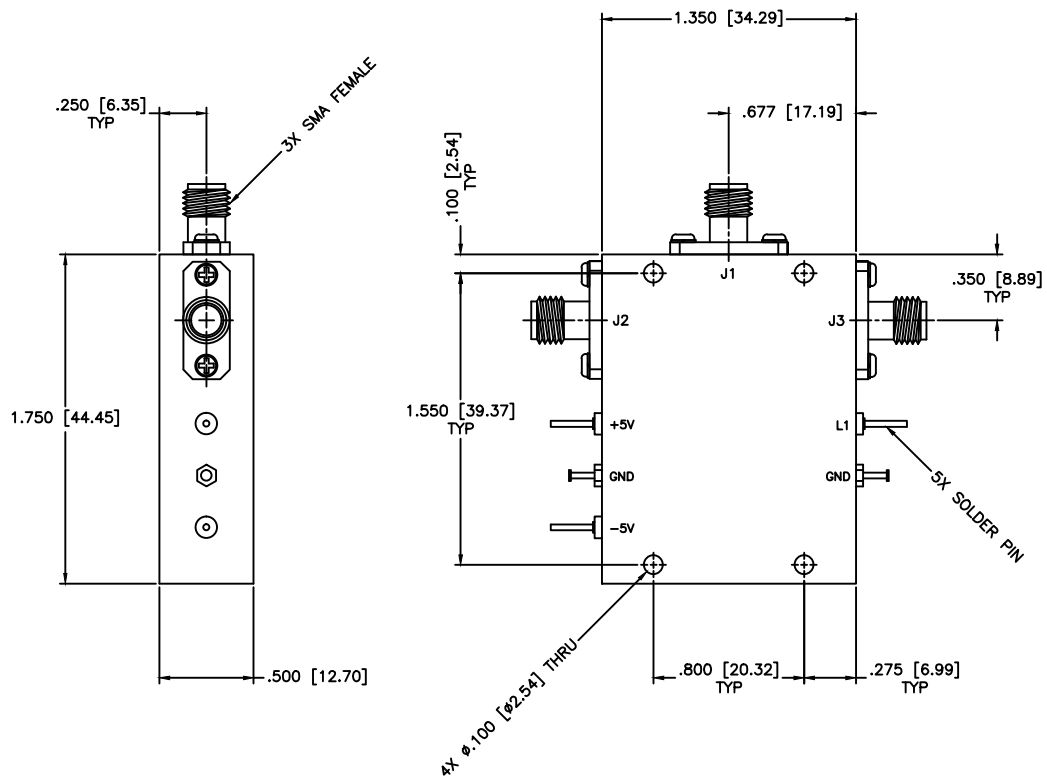


REVISIONS				
ZONE	REV	DESCRIPTION	Date	APPROVED



**SPECIFICATIONS**

Frequency Range: 20–1000 MHz  
 Switch Type: SP2T  
 Isolation: 48dB min  
 Insertion Loss: 2.2dB max  
 VSWR: 1.80:1 Max.  
 Input Power: 200mW (23dBm)  
 Switching Time: 100 (nSec)  
 Driver: Schottkey TTL  
 Voltage/Current Required: ±5 Vdc @ ±30 mA, Typical  
 Individual TTL Control Logic: Logic "0" (-0.3V to +0.8V) = ON  
 Logic "1" (+2.0V to +5.0V) = OFF

TTL Control Logic  
 L1 J1–J2  
 0 Insertion Loss  
 1 Isolation

MATERIAL:		<b>MCLI</b> MICROWAVE COMMUNICATIONS LABORATORIES INC. 7255 30TH AVE. N. SAINT PETERSBURG, FL 33710 TEL: (727) 344-6254 FAX: (727) 381-6116 <a href="http://WWW.MCLI.COM">http://WWW.MCLI.COM</a>	SCALE:	N/A
UNLESS OTHERWISE SPECIFIED: TOLERANCES IN (INCHES) OR [mm] (MILLIMETERS) FRACTIONS: ± 1/64 DECIMALS: ±.02 ±.008 ANGLE: ±1/2°			SHEET:	N/A
DRAWING TITLE:		PIN DIODE SWITCHES		
PART NO.:		D2-101		
DRAWN: Paiboon Luekhamhan DATE: 06-19-2007	APPROVED: T. Nguyen DATE: 06-19-2006	PROPRIETARY NOTICE: THE INFORMATION IN THIS DRAWING IS PROPRIETARY AND SHALL NOT BE USED OR DISCLOSED WITHOUT WRITTEN PERMISSION FROM MICROWAVE COMMUNICATIONS LABORATORIES INC. (MCLI)	CAGE CODE:	OD2L5
		THIRD ANGLE PROJECTION	SIZE: A	REV: A
			DO NOT SCALE THE DRAWING	
			DWG NO. 84150	