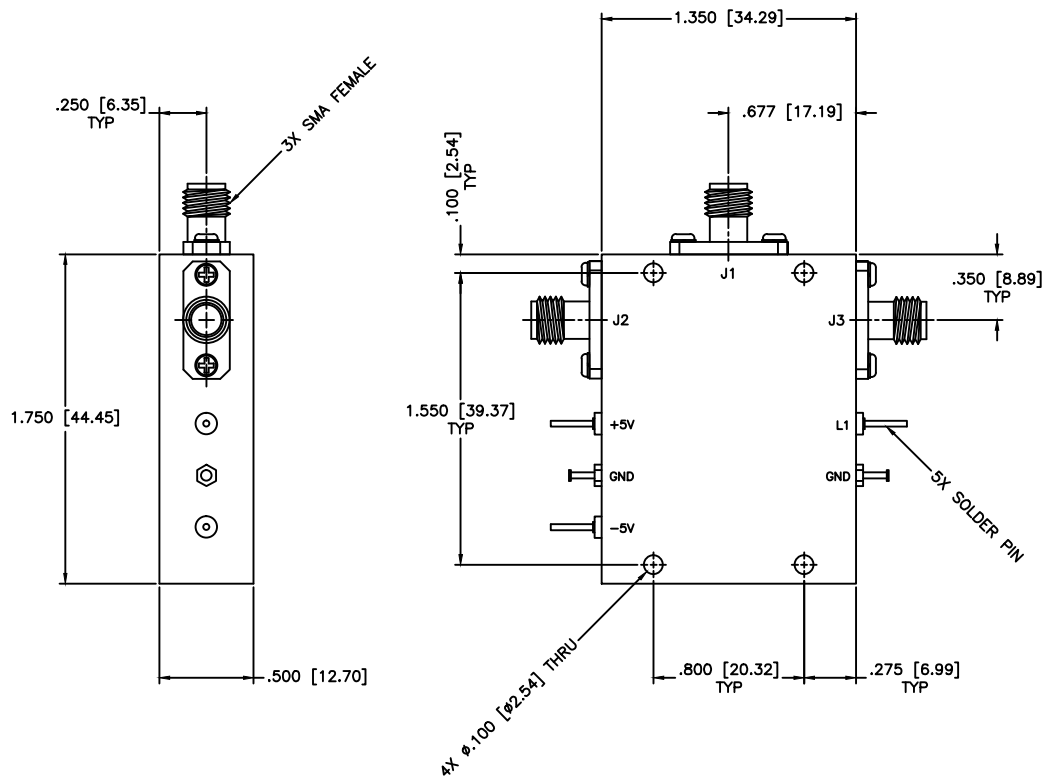


| REVISIONS | | | | |
|-----------|-----|-------------|------|----------|
| ZONE | REV | DESCRIPTION | Date | APPROVED |
| | | | | |



SPECIFICATIONS

Frequency Range: 0.5–18 GHz
 Insertion Loss:
 2.8 dB max @ 0.5 to 4 GHz
 1.6 dB max @ 4.0 to 12.0 GHz
 2.1 dB max @ 12.0 to 18.0 GHz
 Isolation: 58 dB min
 Input / Output VSWR: 1.90:1 Max
 RF Input Power: 10dBm Min.
 Max input: 30dBm
 Switching Speed: 75 ns Max.
 DC Power Supply: +/- 5 VDC max +12 to +15 V @ 50mA max
 +5 V @ 75 mA max
 Control Bit: TTL (Insertion Loss: TTL Lo, Isolation: TTL Hi)
 Impedance: 50 Ohms
 Operating Temperature: -55°C to + 85°C

| | | | |
|---|---|--|---------------|
| MATERIAL: | | MCLI MICROWAVE COMMUNICATIONS LABORATORIES INC. 7255 30TH AVE. N. SAINT PETERSBURG, FL 33710 TEL: (727) 344-6254 FAX: (727) 381-6116 http://WWW.MCLI.COM | SCALE: N/A |
| DRAWING TITLE: PIN DIODE SWITCHES | | | SHEET: |
| UNLESS OTHERWISE SPECIFIED: TOLERANCES IN (INCHES) OR [mm] (MILLIMETERS) FRACTIONS: ± 1/64 DECIMALS: ±.02 ±.008 ANGLE: ±1/2° | | PART NO. D2-100 | |
| PROPRIETARY NOTICE: THE INFORMATION IN THIS DRAWING IS PROPRIETARY AND SHALL NOT BE USED OR DISCLOSED WITHOUT WRITTEN PERMISSION FROM MICROWAVE COMMUNICATIONS LABORATORIES INC. (MCLI) | DRAWN: Paiboon Luekhamhan DATE: 06-19-2007 | CAGE CODE: OD2L5 SIZE: A REV: N/A DO NOT SCALE THE DRAWING | DWG NO. 82839 |
| APPROVED: T. Nguyen DATE: 06-19-2007 | THIRD ANGLE PROJECTION | | |