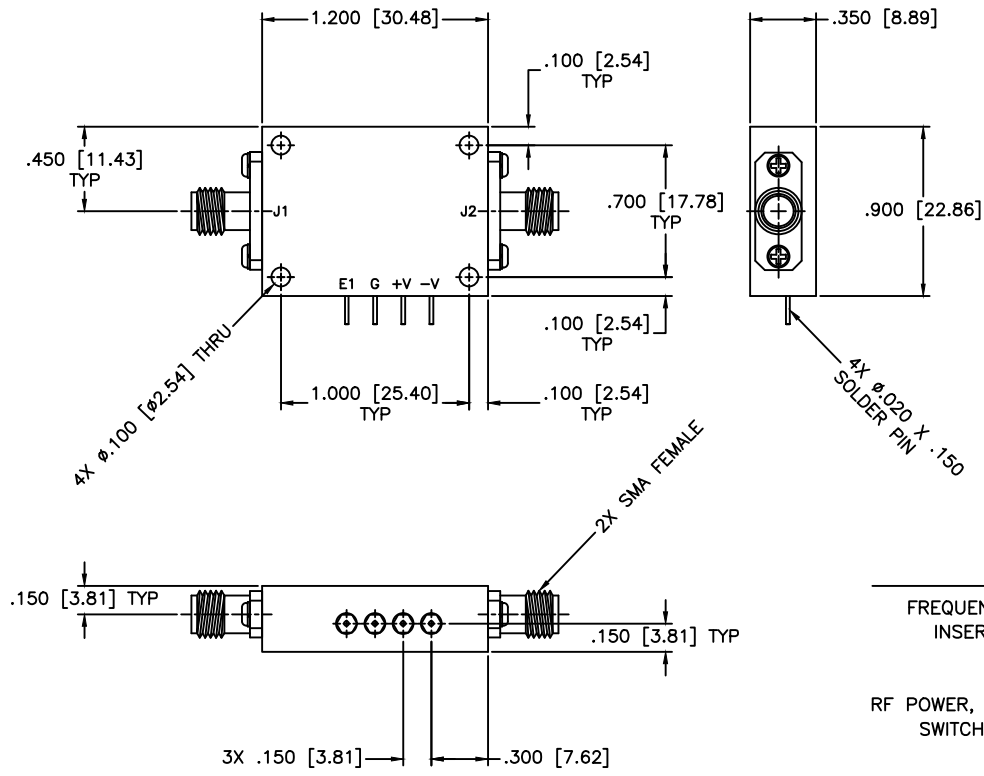


REVISIONS				
ZONE	REV	DESCRIPTION	Date	APPROVED



SPECIFICATIONS	
FREQUENCY RANGE:	18–26.5 GHz
INSERTION LOSS:	4.0dB Max.
ISOLATION:	60dB Min.
VSWR:	2.50:1 Max.
RF POWER, OPERATING:	500mW Typ.
SWITCHING SPEED:	100nSec Max.

OPERATING TEMPERATURE: -40°C to +85°C
 STORAGE TEMPERATURE: -55°C to +125°C
 DC BIAS:
 +5V @ 55 mA MAX.
 -15V @ 55 mA MAX.
 CONTROL:
 TTL 0 = LOW LOSS
 TTL 1 = ISOLATION

MATERIAL:		MCLI MICROWAVE COMMUNICATIONS LABORATORIES INC. 7255 30TH AVE. N. SAINT PETERSBURG, FL 33710 TEL: (727) 344-6254 FAX: (727) 381-6116 http://www.mcli.com	SCALE:	N/A
			SHEET:	N/A
UNLESS OTHERWISE SPECIFIED: TOLERANCES IN (INCHES) OR [mm] (MILLIMETERS) FRACTIONS: ± 1/64 DECIMALS: ± .02 ± .008 ANGLE: ± 1/2°		DRAWING TITLE: PIN DIODE SWITCHES, REFLECTIVE		
DRAWN: Paiboon Luekhamhan		PART NO. D1-18/REF		
DATE: 12-03-2014		CAGE CODE: OD2L5		
APPROVED: T. Nguyen		DATE: 12-03-2014		SIZE: A
PROPRIETARY NOTICE: THE INFORMATION IN THIS DRAWING IS PROPRIETARY AND SHALL NOT BE USED OR DISCLOSED WITHOUT WRITTEN PERMISSION FROM MICROWAVE COMMUNICATIONS LABORATORIES INC. (MCLI) THIRD ANGLE PROJECTION		REV: N/A	DWG NO. 83036	
		DO NOT SCALE THE DRAWING		