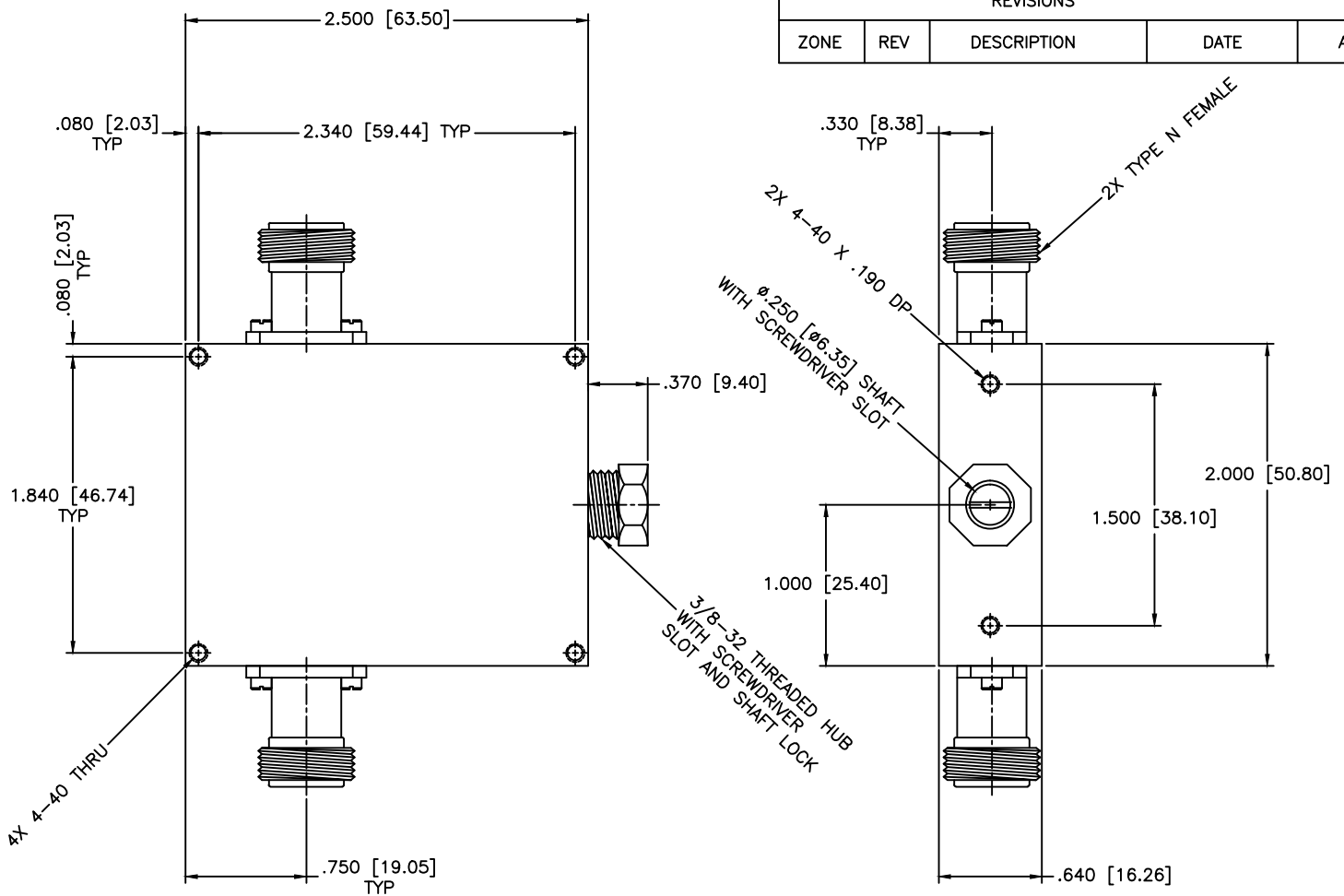


| REVISIONS |     |             |      |          |
|-----------|-----|-------------|------|----------|
| ZONE      | REV | DESCRIPTION | DATE | APPROVED |



**SPECIFICATIONS**

Frequency Range: 6-11 GHz  
 Attenuation: 40dB  
 Insertion Loss: 0.5 Max.  
 VSWR: 1.50:1 Max.  
 Power Handling: 7W Avg. 3kW Peak

**ENVIRONMENTAL**

Temperature Range: -55°C to +110°C  
 Shock: 15 G's, 11mS, 1/2 sine  
 Vibration: 3 G's overall  
 Altitude: 40,000ft. Survival 25,000ft Operating

|                              |                     |
|------------------------------|---------------------|
| MATERIAL:                    |                     |
|                              |                     |
| DRAWN:<br>Paiboon Luekhamhan | DATE:<br>02-08-2011 |
| APPROVED:<br>T. Nguyen       | DATE:<br>02-08-2011 |

**MCLI** MICROWAVE COMMUNICATIONS LABORATORIES INC.  
 7255 30TH AVE. N. SAINT PETERSBURG, FL 33710  
 TEL: (727) 344-6254 FAX: (727) 381-6116  
 http://WWW.MCLI.COM

|        |     |
|--------|-----|
| SCALE: | N/A |
| SHEET: | N/A |

|   |             |   |  |
|---|-------------|---|--|
| UNLESS OTHERWISE SPECIFIED:<br>TOLERANCES<br>IN (INCHES) OR [mm] (MILLIMETERS)<br>FRACTIONS: ± 1/64<br>DECIMALS: ±.01 ±.005<br>ANGLE: ±1/2° |             | DRAWING TITLE:<br><b>CONTINUOUSLY VARIABLE ATTENUATOR</b> |  |
| PART NO.<br><b>CVA9-40/NF</b>   |             | CAGE CODE:<br><b>0D2L5</b>                                |  |
| SIZE:<br>N/A  | REV:<br>N/A | DWG NO.<br><b>85427</b>                                   |  |
| DO NOT SCALE THE DRAWING  |             |   |  |