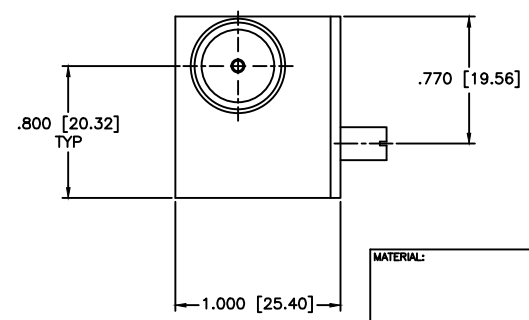
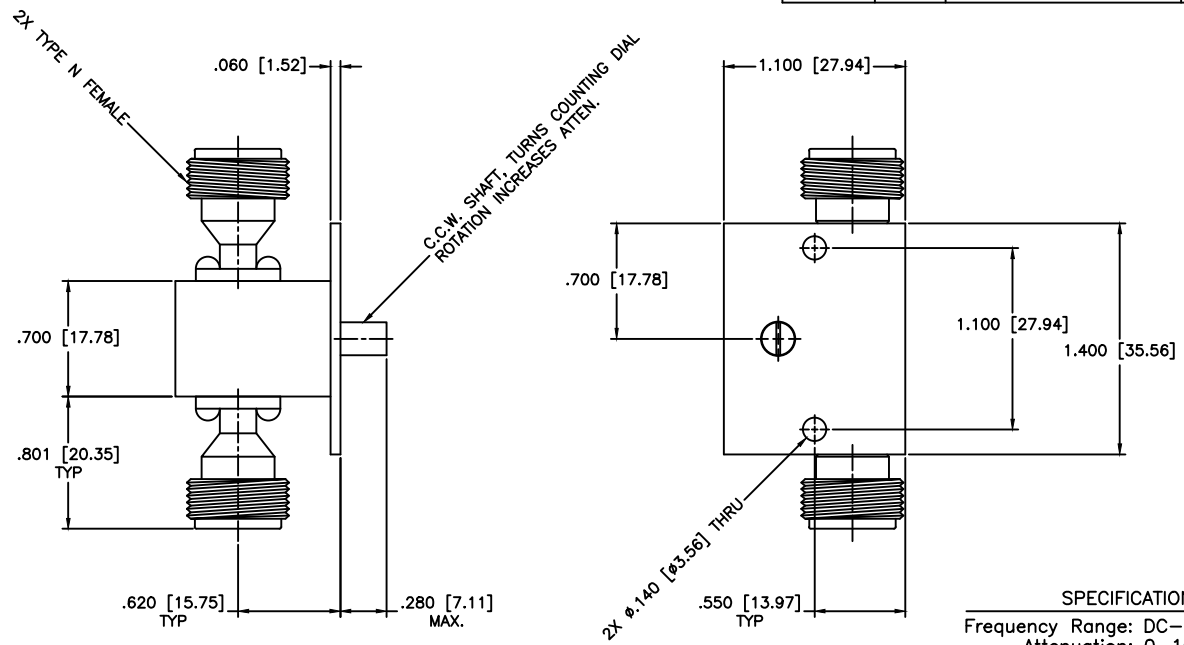


REVISIONS				
ZONE	REV	DESCRIPTION	DATE	APPROVED



SPECIFICATIONS

Frequency Range: DC-1.0 GHz
 Attenuation: 0-10dB
 Insertion Loss: 1.2dB Max.
 VSWR: 1.80:1 Max.
 Flatness: ±1.5dB
 RF Power: 0.5W Avg.
 Temperature Range: -24°C to +70°C

Aluminum body, SS connectors
 Corrosion resistant 316 SS epoxy coating
 IAW MIL-F-14072

MATERIAL:			MICROWAVE COMMUNICATIONS LABORATORIES INC. 7255 30TH AVE. N. SAINT PETERSBURG, FL 33710 TEL: (727) 344-6254 FAX: (727) 381-6116 http://WWW.MCLI.COM		SCALE:	N/A
					SHEET:	N/A
UNLESS OTHERWISE SPECIFIED: TOLERANCES IN (INCHES) OR [mm] (MILLIMETERS) FRACTIONS: ± 1/64 DECIMALS: ±.01 ±.005 ANGLE: ±1/2°		DRAWING TITLE:		VARIABLE ATTENUATOR, TYPE N FEMALE		
DRAWN: Paiboon Luethamhan		DATE: 06-09-2016		PART NO. CVA39-10/NF		
APPROVED: T. Nguyen		DATE: 06-09-2016		CAGE CODE:	SIZE:	REV:
				OD2L5	N/A	N/A
				DO NOT SCALE THE DRAWING		DWG NO. 86626

THIRD ANGLE PROJECTION