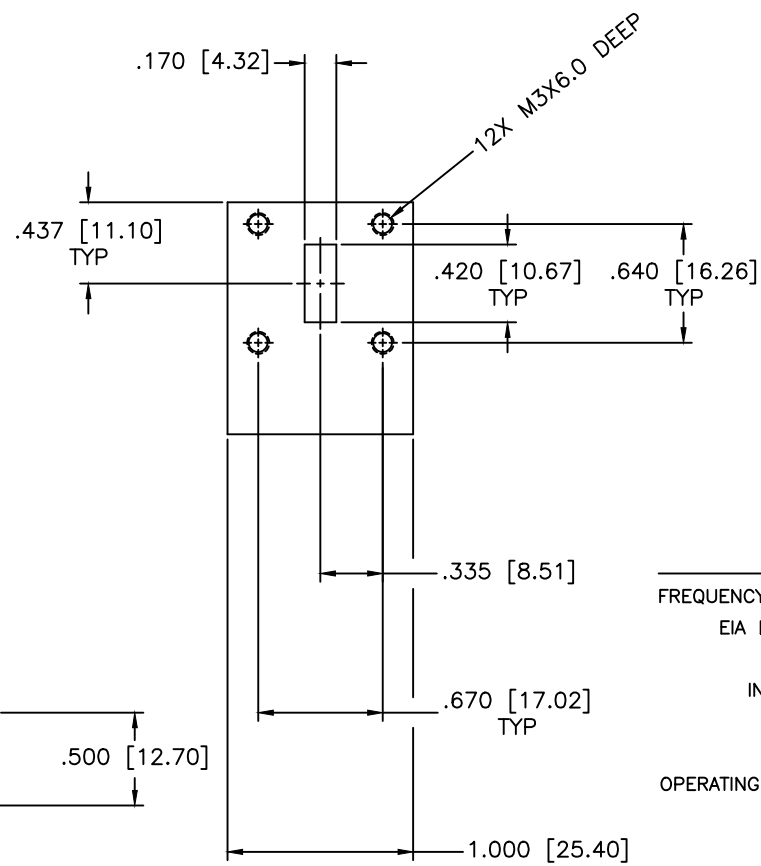
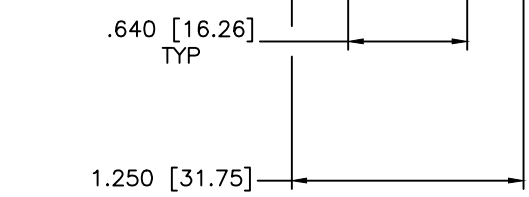
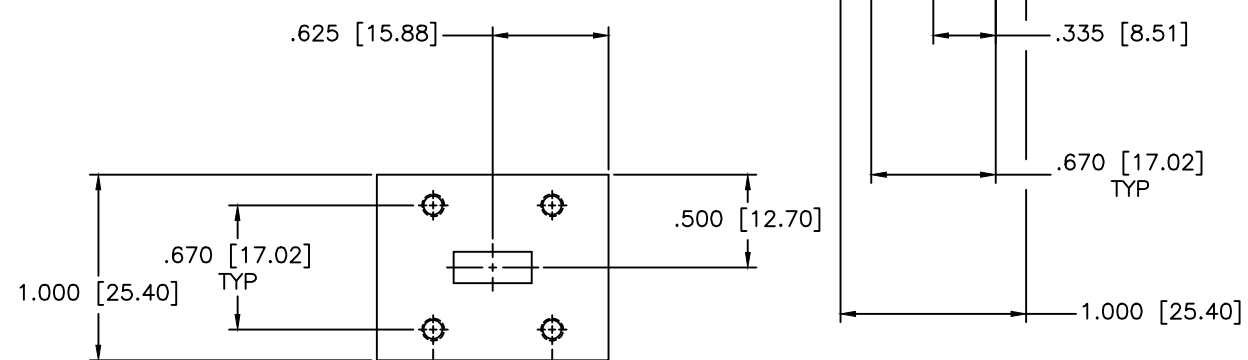
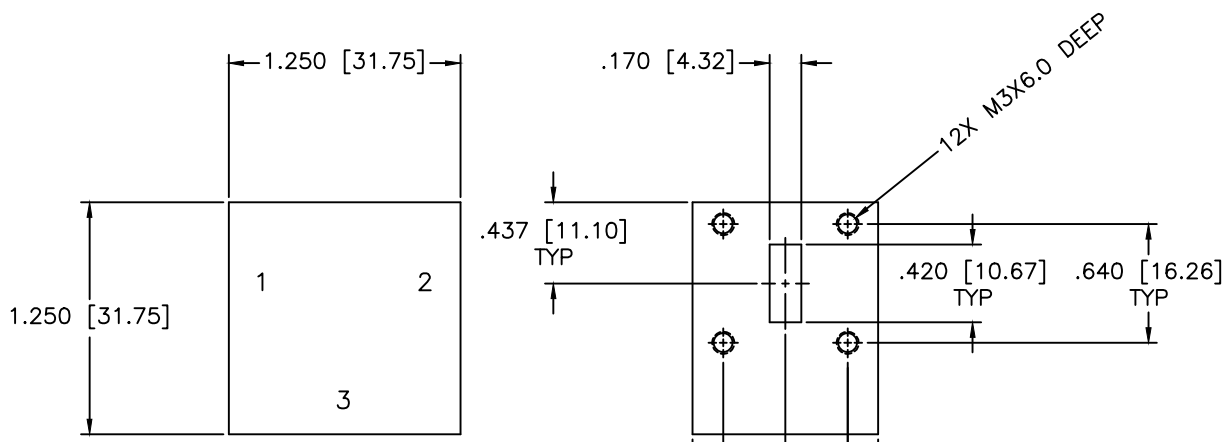


REVISIONS				
ZONE	REV	DESCRIPTION	DATE	APPROVED



**SPECIFICATIONS**

FREQUENCY CENTER (FC): 24.12±.25 GHz  
 EIA DESIGN (1,2,3): WR42  
 VSWR: 1.11:1 Max.  
 INSERTION LOSS: 0.20dB Max.  
 ISOLATION: 25dB Min.  
 POWER: 50W Average  
 OPERATING TEMPERATURE: -40°C to +80°C

MATERIAL:			MICROWAVE COMMUNICATIONS LABORATORIES INC. 7255 30TH AVE. N. SAINT PETERSBURG, FL 33710 TEL: (727) 344-6254 FAX: (727) 381-6116 http://WWW.MCLI.COM		SCALE: N/A
UNLESS OTHERWISE SPECIFIED: TOLERANCES IN (INCHES) OR [mm] (MILLIMETERS) FRACTIONS: ± 1/64 DECIMALS: ±.01 ±.005 ANGLE: ±1/2°			DRAWING TITLE: WR42 WAVEGUIDE CIRCULATOR		SHEET: N/A
DRAWN: Paiboon Luexhamhan DATE: 11-02-2011		PART NO. CSW-28		PROPRIETARY NOTICE: THE INFORMATION IN THIS DRAWING IS PROPRIETARY AND SHALL NOT BE USED OR DISCLOSED WITHOUT WRITTEN PERMISSION FROM MICROWAVE COMMUNICATIONS LABORATORIES INC. (MCLI)	
APPROVED: T. Nguyen DATE: 11-02-2011		CAGE CODE: OD2L5	SIZE: A	REV: N/A	DWG NO. 85924
		DO NOT SCALE THE DRAWING			