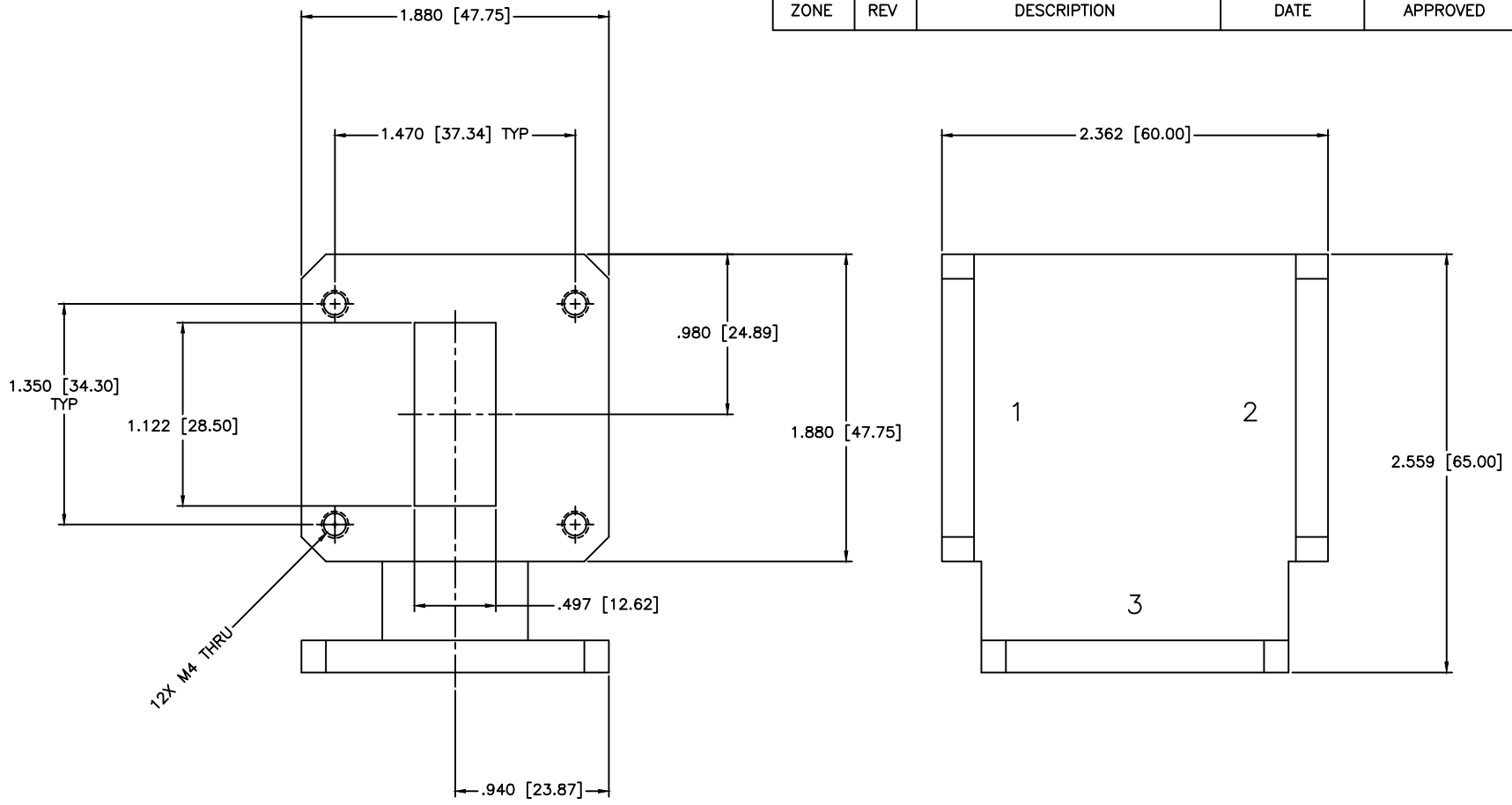


REVISIONS				
ZONE	REV	DESCRIPTION	DATE	APPROVED



12X M4 THRU

SPECIFICATIONS

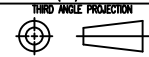
FREQUENCY RANGE: 7.8–8.5 GHz
 EIA DESIGN (1,2,3): WR112
 VSWR: 1.15:1 Max.
 INSERTION LOSS: 0.20dB Max.
 ISOLATION: 23dB Min.
 AVERAGE POWER: 200W, 500W Peak
 OPERATING TEMPERATURE: -30°C to +70°C

MATERIAL:			MICROWAVE COMMUNICATIONS LABORATORIES INC. 7255 30TH AVE. N. SAINT PETERSBURG, FL 33710 TEL: (727) 344-6254 FAX: (727) 381-6116 http://WWW.MCLI.COM		SCALE:	N/A
UNLESS OTHERWISE SPECIFIED: TOLERANCES IN (INCHES) OR [mm] (MILLIMETERS) FRACTIONS: ± 1/64 DECIMALS: ±.01 ±.005 ANGLE: ±1/2°			DRAWING TITLE:		SHEET:	N/A
DRAWN:		PART NO.		WR112 WAVEGUIDE CIRCULATOR		
DATE:		CAGE CODE:		CSW-2		
APPROVED:		SIZE:		REV:	DWG NO.	
T. Nguyen		A		N/A	85534	
DATE:		DO NOT SCALE THE DRAWING				
02-16-2011		OD2L5				



UNLESS OTHERWISE SPECIFIED:
 TOLERANCES
 IN (INCHES) OR [mm] (MILLIMETERS)
 FRACTIONS: ± 1/64
 DECIMALS: ±.01 ±.005
 ANGLE: ±1/2°

PROPRIETARY NOTICE:
 THE INFORMATION IN THIS DRAWING IS PROPRIETARY
 AND SHALL NOT BE USED OR DISCLOSED WITHOUT WRITTEN
 PERMISSION FROM MICROWAVE COMMUNICATIONS
 LABORATORIES INC. (MCLI)



THIRD ANGLE PROJECTION