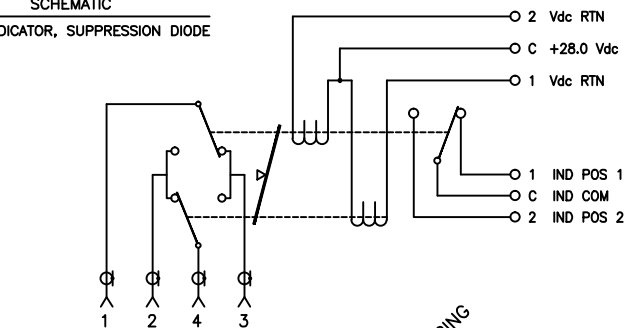


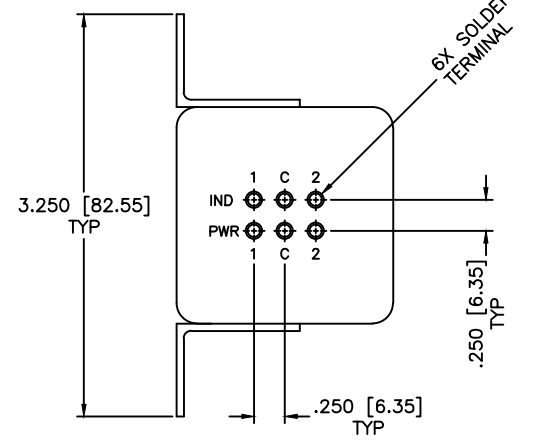
4 | 3 | 2 | 1

REVISIONS				
ZONE	REV	DESCRIPTION	DATE	APPROVED

**SCHEMATIC**  
LATCHING, INDICATOR, SUPPRESSION DIODE



POS 1 NORMALLY CLOSED  
POS 1 { 1-3 & 2-4 }  
POS 2 { 1-2 & 3-4 }



**SPECIFICATIONS**

FREQUENCY RANGE: DC-4.0 GHz  
VSWR: 1.30:1 MAX.  
INSERTION LOSS: 0.30dB MAX.  
ISOLATION: 70dB MIN.

**MECHANICAL**

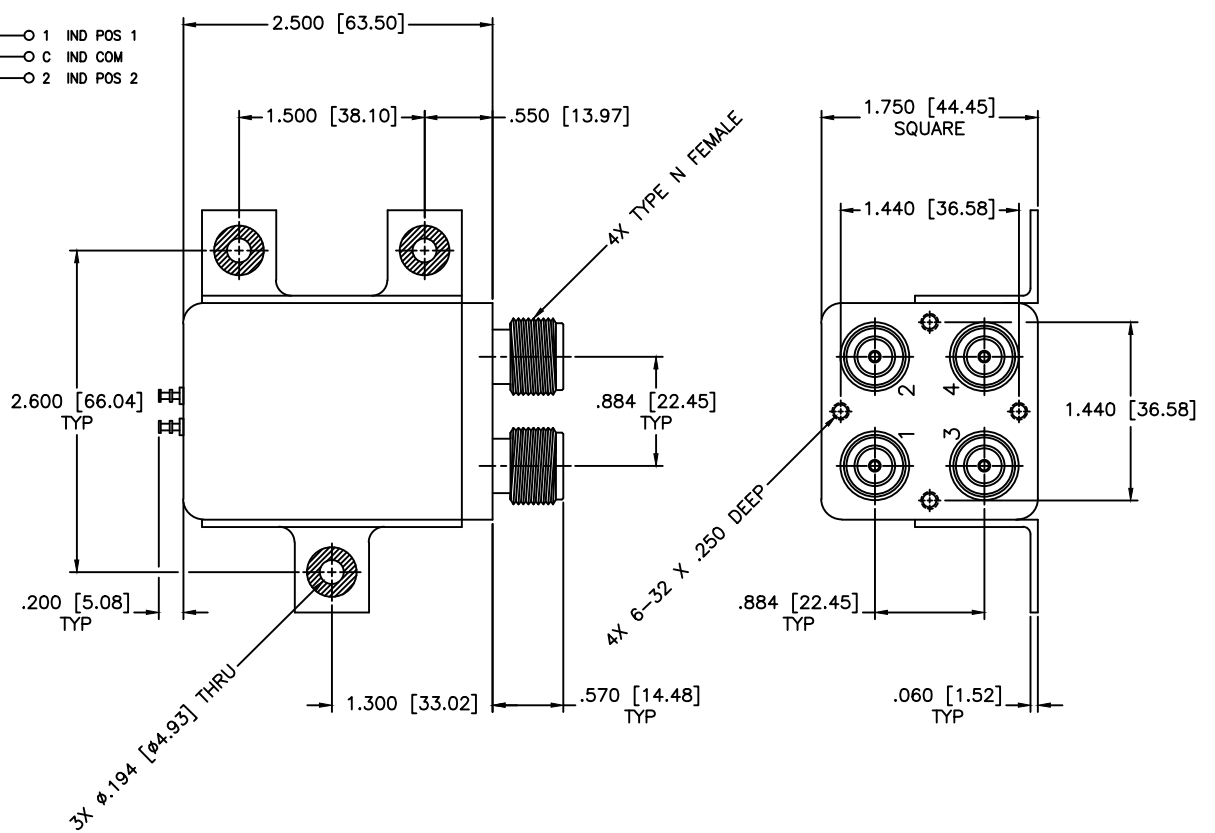
CONTACT: BREAK BEFORE MAKE  
ACTUATOR: LATCHING  
SWITCHING SPEED: 20 mSEC MAX

**ELECTRICAL**

ACTUATOR VOLTAGE: 28.0±3.0 Vdc  
ACTUATOR CURRENT: 200mA MAX @ 28.0 Vdc  
POWER HANDLING: 350W CW @ 1.0GHz  
IMPEDANCE: 50 Ohms

**ENVIRONMENTAL**

OPERATING TEMP: -54°C to +90°C  
SINE VIBRATION: 30 G'S rms  
LIFE: 1,000,000 CYCLES  
RANDOM VIBRATION: 20 G'S rms



MATERIAL:	DRAWING: Paiboon Luekhamhan	DATE: 02-18-2009		MICROWAVE COMMUNICATIONS LABORATORIES INC. 7225 30TH AVE. N. SAINT PETERSBURG, FL 33710 TEL: (727) 344-8254 FAX: (727) 381-8116 HTTP://WWW.MCLI.COM		SCALE: N/A
				UNLESS OTHERWISE SPECIFIED: TOLERANCES IN (INCHES) OR (mm) (MILLIMETERS) FRACTIONS: ± 1/64 DECIMALS: ±.02 ±.009 ANGLE: ±1/2°		SHEET: N/A
APPROVED: T. Nguyen	DATE: 02-18-2009	REFER TO THE DRAWING FOR DIMENSIONS AND TOLERANCES UNLESS OTHERWISE SPECIFIED. ALL DIMENSIONS ARE UNLESS OTHERWISE SPECIFIED. DIMENSIONS ARE TO UNLESS OTHERWISE SPECIFIED. DIMENSIONS ARE TO UNLESS OTHERWISE SPECIFIED.	DRAWING TITLE: ELECTROMECHANICAL SWITCHES		PART NO. C2-3-LI/28P	
			CAGE CODE: OD2L5	SIZE: N/A	REV: N/A	DWG NO. 84169
DO NOT SCALE THE DRAWING						

4 | 3 | 2 | 1