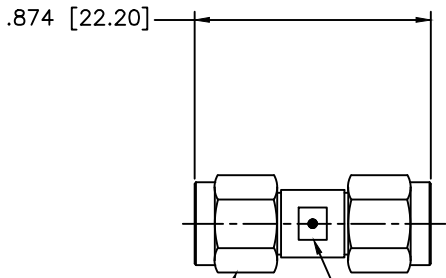




REVISIONS				
ZONE	REV	DESCRIPTION	Date	APPROVED



2X TYPE SMA MALE
.315 HEX [8.0]

SLOTTED .217 [5.5]

MATERIAL:		 MICROWAVE COMMUNICATIONS LABORATORIES INC. 7255 30TH AVE. N. SAINT PETERSBURG, FL 33710 TEL: (727) 344-6254 FAX: (727) 381-6116 http://WWW.MCLI.COM	SCALE:	N/A
			SHEET:	N/A
UNLESS OTHERWISE SPECIFIED: TOLERANCES IN (INCHES) OR [mm] (MILLIMETERS) FRACTIONS: ± 1/64 DECIMALS: ± .02 ± .015 ANGLE: ± 1/2°		DRAWING TITLE: SMA PLUG TO PLUG ADAPTER		
DRAWN: Paiboon Luekhamhan		PART NO. ADS-18-PP		
DATE: 02-10-2010		CAGE CODE: OD2L5		
APPROVED: T. Nguyen		DATE: 02-10-2010		
PROCEEDURE NOTES: THE INFORMATION IN THIS DRAWING IS PROPRIETARY AND SHALL NOT BE USED OR DISCLOSED WITHOUT WRITTEN PERMISSION FROM MICROWAVE COMMUNICATIONS LABORATORIES INC. (MCLI)		SIZE: N/A REV: N/A DWG NO. 84687		
THIRD ANGLE PROJECTION 		DO NOT SCALE THE DRAWING		