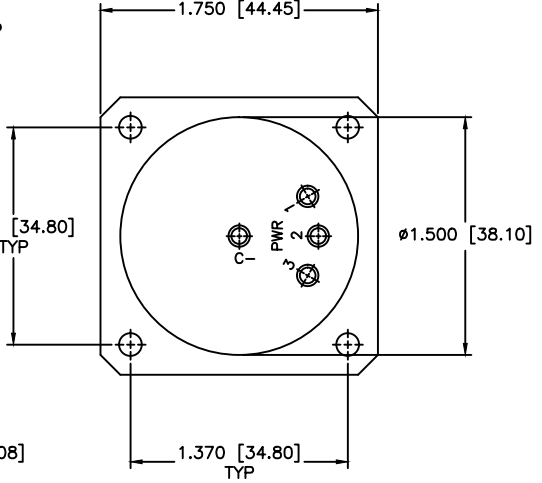
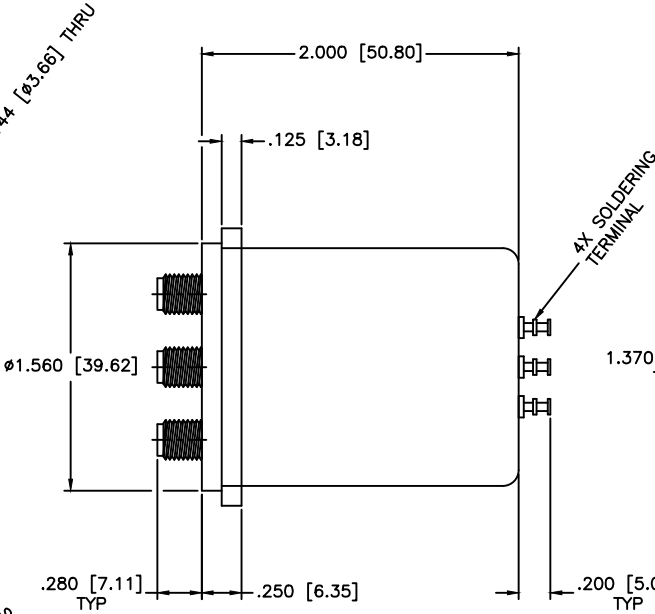
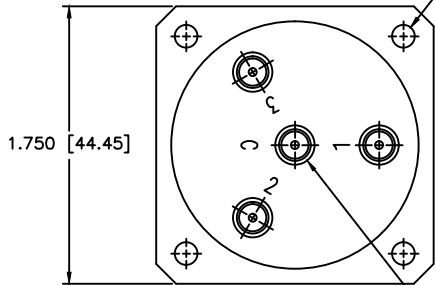
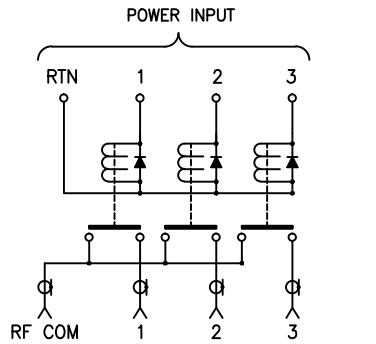


REVISIONS				
ZONE	REV	DESCRIPTION	Date	APPROVED



**SPECIFICATIONS**

FREQUENCY RANGE: DC-26.5 GHz  
 VSWR: 1.60:1 MAX.  
 INSERTION LOSS: 0.70dB MAX.  
 ISOLATION: 50dB MIN.

**MECHANICAL**

CONTACT: BREAK BEFORE MAKE  
 ACTUATOR: MOMENTARY  
 SWITCHING SPEED: 20 mSEC MAX

**ELECTRICAL**

ACTUATOR VOLTAGE: 28.0 Vdc (22.0-32.0 Vdc)  
 ACTUATOR CURRENT: 150mA MAX @ 28.0 Vdc  
 POWER HANDLING: 200W CW @ 1.0GHz  
 IMPEDANCE: 50 Ohms

**ENVIRONMENTAL**

OPERATING TEMP: -54°C to +90°C  
 SINE VIBRATION: 30 G'S rms  
 LIFE: 1,000,000 CYCLES  
 RANDOM VIBRATION: 20 G'S rms

4x  $\phi$  1.144 [ $\phi$ 3.66] THRU  
 4x TYPE SMA FEMALE  
 3x EQUALLY SPACED AT 120°  
 ON  $\phi$  1.062 [ $\phi$ 26.97] B.C.

MATERIAL:	
DRAWN: Paiboon Luengkhamhan	DATE: 03-26-2006
APPROVED: T. Nguyen	DATE: 03-26-2006



MICROWAVE COMMUNICATIONS LABORATORIES INC.  
 7255 30TH AVE. N. SAINT PETERSBURG, FL 33710  
 TEL: (727) 344-6254 FAX: (727) 381-6116  
 http://WWW.MCLI.COM

SCALE:	N/A
SHEET:	N/A

UNLESS OTHERWISE SPECIFIED:  
 TOLERANCES  
 IN (INCHES) OR [mm] (MILLIMETERS)  
 FRACTIONS:  $\pm$  1/64  
 DECIMALS:  $\pm$  .02  $\pm$  .009  
 ANGLE:  $\pm$  1/2°

DRAWING TITLE: ELECTROMECHANICAL SWITCHES

PART NO. A3-8-MS

PROPRIETARY NOTICE:  
 THE INFORMATION IN THIS DRAWING IS PROPRIETARY  
 AND SHALL NOT BE USED OR DISCLOSED WITHOUT WRITTEN  
 PERMISSION FROM MICROWAVE COMMUNICATIONS  
 LABORATORIES INC. (MCLI)  
 THIRD ANGLE PROJECTION

CAGE CODE: OD2L5	SIZE: N/A	REV: N/A	DWG NO. 81611
DO NOT SCALE THE DRAWING			