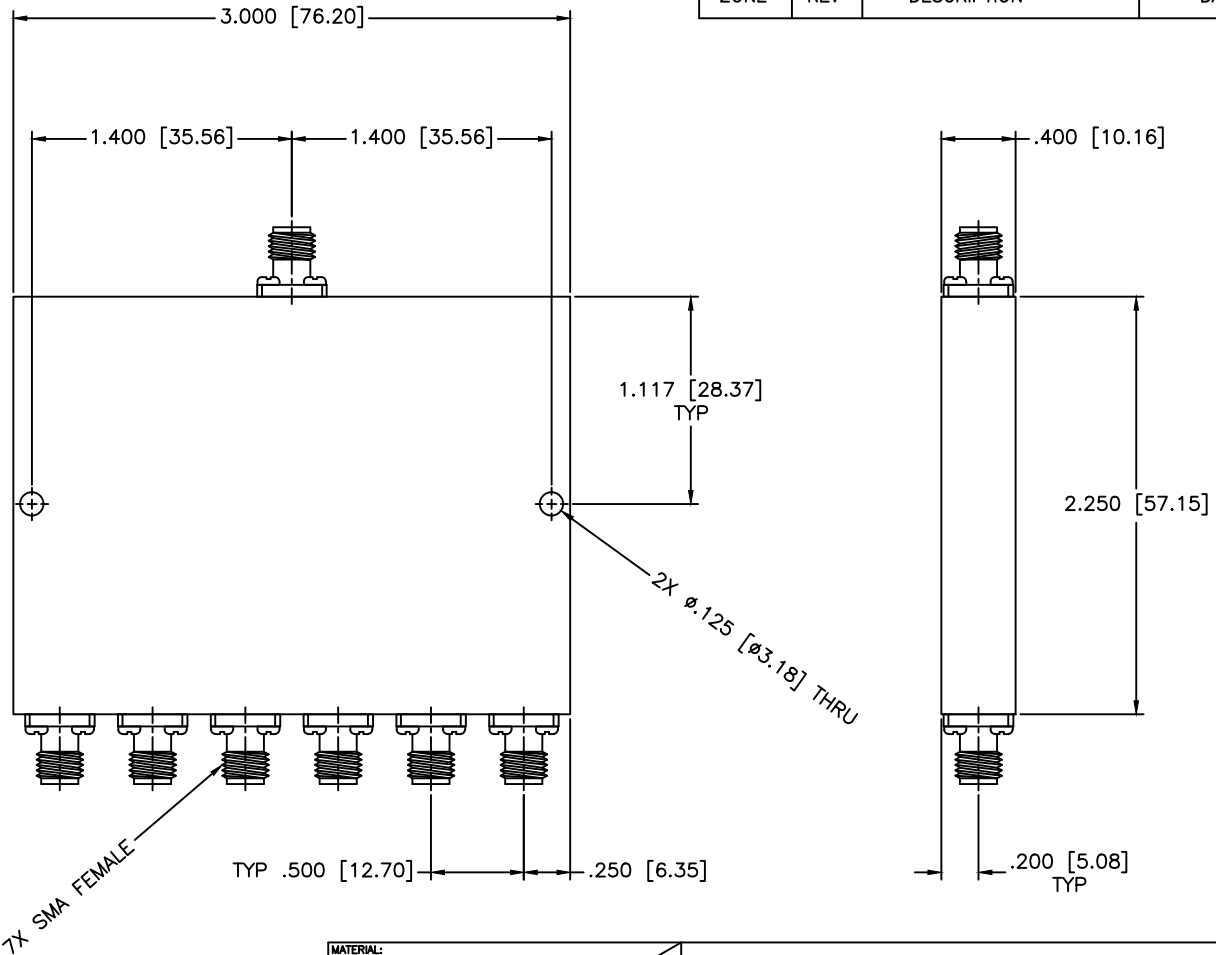


REVISIONS				
ZONE	REV	DESCRIPTION	DATE	APPROVED



SPECIFICATIONS

Frequency Range: 8–26.5 GHz
 Insertion Loss: 3.9dB Max.
 Isolation: 11dB Min.
 Amplitude Balance: ±1.5dB Max.
 VSWR: 2.00:1 Max.
 Input Power: 20W (Load vswr @ 1.2)

MATERIAL:	
DRAWN: Paiboon Luekhamhan	DATE: 01-25-2007
APPROVED: T. Nguyen	DATE: 01-25-2007

	MICROWAVE COMMUNICATIONS LABORATORIES INC. 7255 30TH AVE. N. SAINT PETERSBURG, FL 33710 TEL: (727) 344-6254 FAX: (727) 381-6116 http://WWW.MCLI.COM		SHEET:	N/A
	UNLESS OTHERWISE SPECIFIED: TOLERANCES IN (INCHES) OR [mm] (MILLIMETERS) FRACTIONS: ± 1/64 DECIMALS: ±.01 ±.005 ANGLE: ±1/2°		DRAWING TITLE:	6-WAY POWER DIVIDER
PROPRIETARY NOTICE: THE INFORMATION IN THIS DRAWING IS PROPRIETARY AND SHALL NOT BE USED OR DISCLOSED WITHOUT WRITTEN PERMISSION FROM MICROWAVE COMMUNICATIONS LABORATORIES INC. (MCLI)		PART NO.	PS6-12	
CAGE CODE:	SIZE:	REV:	DWG NO.	
OD2L5	A	A	81913	
DO NOT SCALE THE DRAWING				

