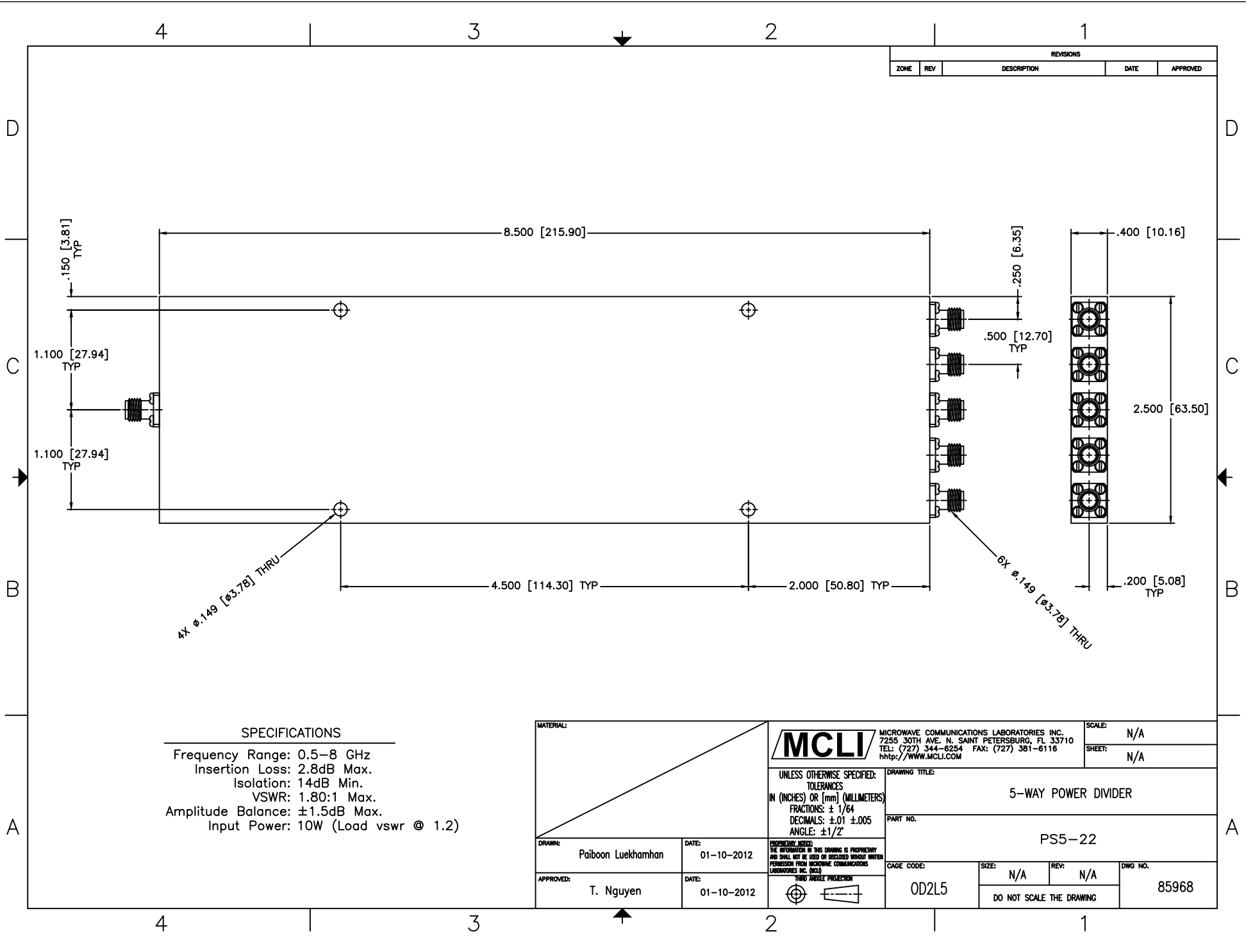


REVISIONS				
ZONE	REV	DESCRIPTION	DATE	APPROVED



SPECIFICATIONS

Frequency Range: 0.5–8 GHz
 Insertion Loss: 2.8dB Max.
 Isolation: 14dB Min.
 VSWR: 1.80:1 Max.
 Amplitude Balance: ±1.5dB Max.
 Input Power: 10W (Load vswr @ 1.2)

MATERIAL:		MCLI MICROWAVE COMMUNICATIONS LABORATORIES INC. 7255 30TH AVE. N. SAINT PETERSBURG, FL 33710 TEL: (727) 344-6254 FAX: (727) 381-6116 http://www.MCLI.COM	SCALE: N/A
			SHEET: N/A
		DRAWING TITLE:	5-WAY POWER DIVIDER
		PART NO.:	PS5-22
DRAWN: Paiboon Luekhamhan DATE: 01-10-2012	DATE: 01-10-2012	CAGE CODE: OD2L5	SIZE: N/A REV: N/A DO NOT SCALE THE DRAWING
APPROVED: T. Nguyen	DATE: 01-10-2012	DWG NO.: 85968	

UNLESS OTHERWISE SPECIFIED:
 TOLERANCES
 IN (INCHES) OR (mm) (MILLIMETERS)
 FRACTIONS: ± 1/64
 DECIMALS: ±0.01 ±0.005
 ANGLE: ±1/2°

THIRD ANGLE PROJECTION

PROPRIETARY NOTICE:
 THE INFORMATION IN THIS DRAWING IS PROPRIETARY
 AND SHALL NOT BE USED OR REPRODUCED WITHOUT
 PERMISSION FROM MICROWAVE COMMUNICATIONS
 LABORATORIES INC. (MCLI)