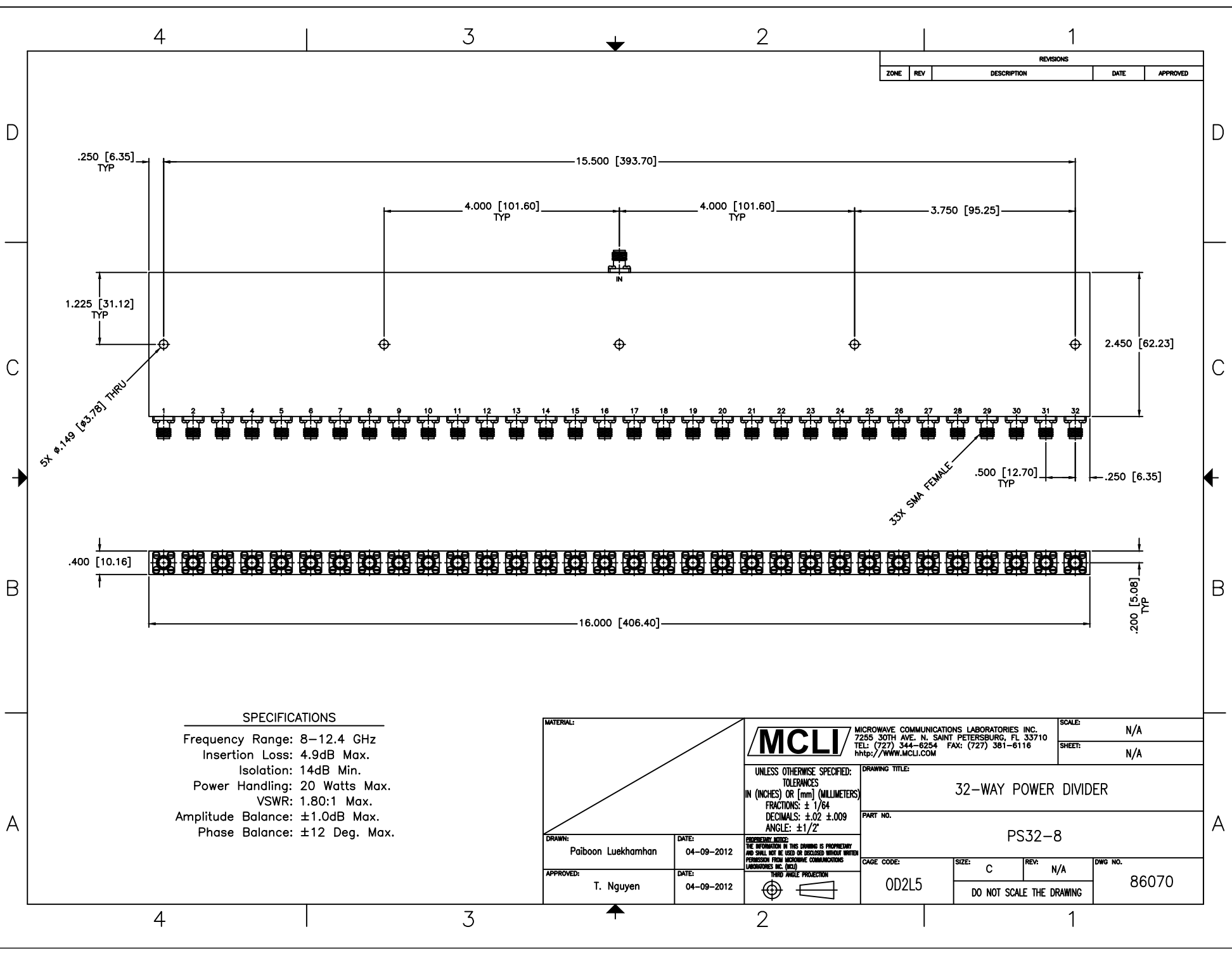


REVISIONS				
ZONE	REV	DESCRIPTION	DATE	APPROVED



**SPECIFICATIONS**

Frequency Range: 8–12.4 GHz  
 Insertion Loss: 4.9dB Max.  
 Isolation: 14dB Min.  
 Power Handling: 20 Watts Max.  
 VSWR: 1.80:1 Max.  
 Amplitude Balance: ±1.0dB Max.  
 Phase Balance: ±12 Deg. Max.

MATERIAL:			MICROWAVE COMMUNICATIONS LABORATORIES INC. 7255 30TH AVE. N. SAINT PETERSBURG, FL 33710 TEL: (727) 344-6254 FAX: (727) 381-6116 http://WWW.MCLI.COM		SCALE: N/A
UNLESS OTHERWISE SPECIFIED: TOLERANCES IN (INCHES) OR [mm] (MILLIMETERS) FRACTIONS: ± 1/64 DECIMALS: ±.02 ±.009 ANGLE: ±1/2°			DRAWING TITLE: <b>32-WAY POWER DIVIDER</b>		SHEET: N/A
DRAWN: Paiboon Luekhamhan		DATE: 04-09-2012	PART NO. <b>PS32-8</b>		DWG NO. <b>86070</b>
APPROVED: T. Nguyen		DATE: 04-09-2012	CAGE CODE: OD2L5	SIZE: C REV: N/A DO NOT SCALE THE DRAWING	

