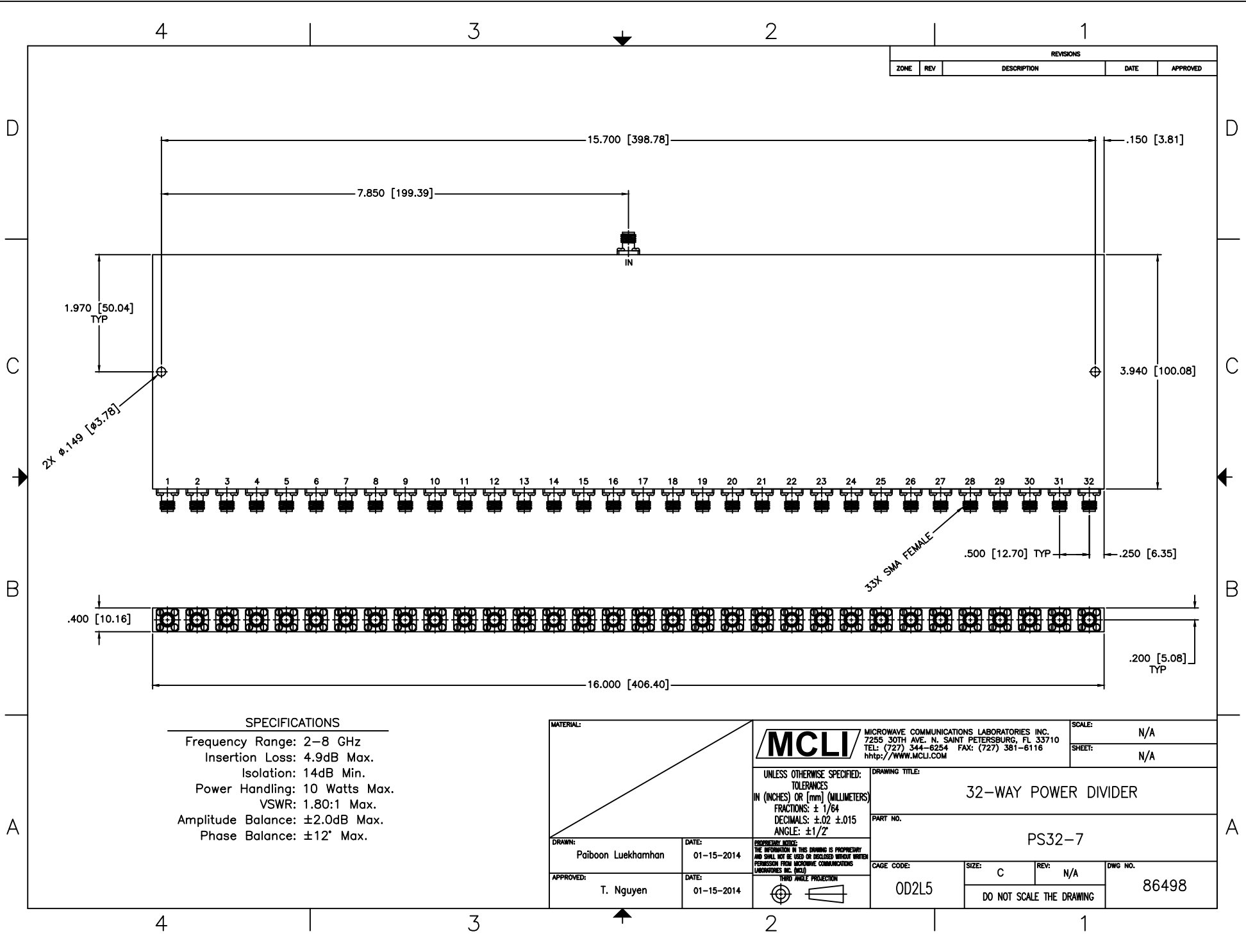


REVISIONS				
ZONE	REV	DESCRIPTION	DATE	APPROVED



SPECIFICATIONS

Frequency Range: 2–8 GHz
 Insertion Loss: 4.9dB Max.
 Isolation: 14dB Min.
 Power Handling: 10 Watts Max.
 VSWR: 1.80:1 Max.
 Amplitude Balance: ±2.0dB Max.
 Phase Balance: ±12° Max.

MATERIAL:		 MCLI MICROWAVE COMMUNICATIONS LABORATORIES INC. 7255 30TH AVE. N. SAINT PETERSBURG, FL 33710 TEL: (727) 344-6254 FAX: (727) 381-6116 http://www.mcli.com	SCALE:	N/A
			SHEET:	N/A
		UNLESS OTHERWISE SPECIFIED: TOLERANCES IN (INCHES) OR [mm] (MILLIMETERS) FRACTIONS: ± 1/64 DECIMALS: ±.02 ±.015 ANGLE: ±1/2°	DRAWING TITLE: 32-WAY POWER DIVIDER	
		PROPRIETARY NOTICE: THE INFORMATION IN THIS DRAWING IS PROPRIETARY AND SHALL NOT BE USED OR DISCLOSED WITHOUT WRITTEN PERMISSION FROM MICROWAVE COMMUNICATIONS LABORATORIES INC. (MCLI)	PART NO.: PS32-7	
DRAWN: Paiboon Luekhamhan	DATE: 01-15-2014	 THIRD ANGLE PROJECTION	CAGE CODE:	SIZE: C
APPROVED: T. Nguyen	DATE: 01-15-2014		REV: N/A	DWG NO.: 86498
		DO NOT SCALE THE DRAWING		