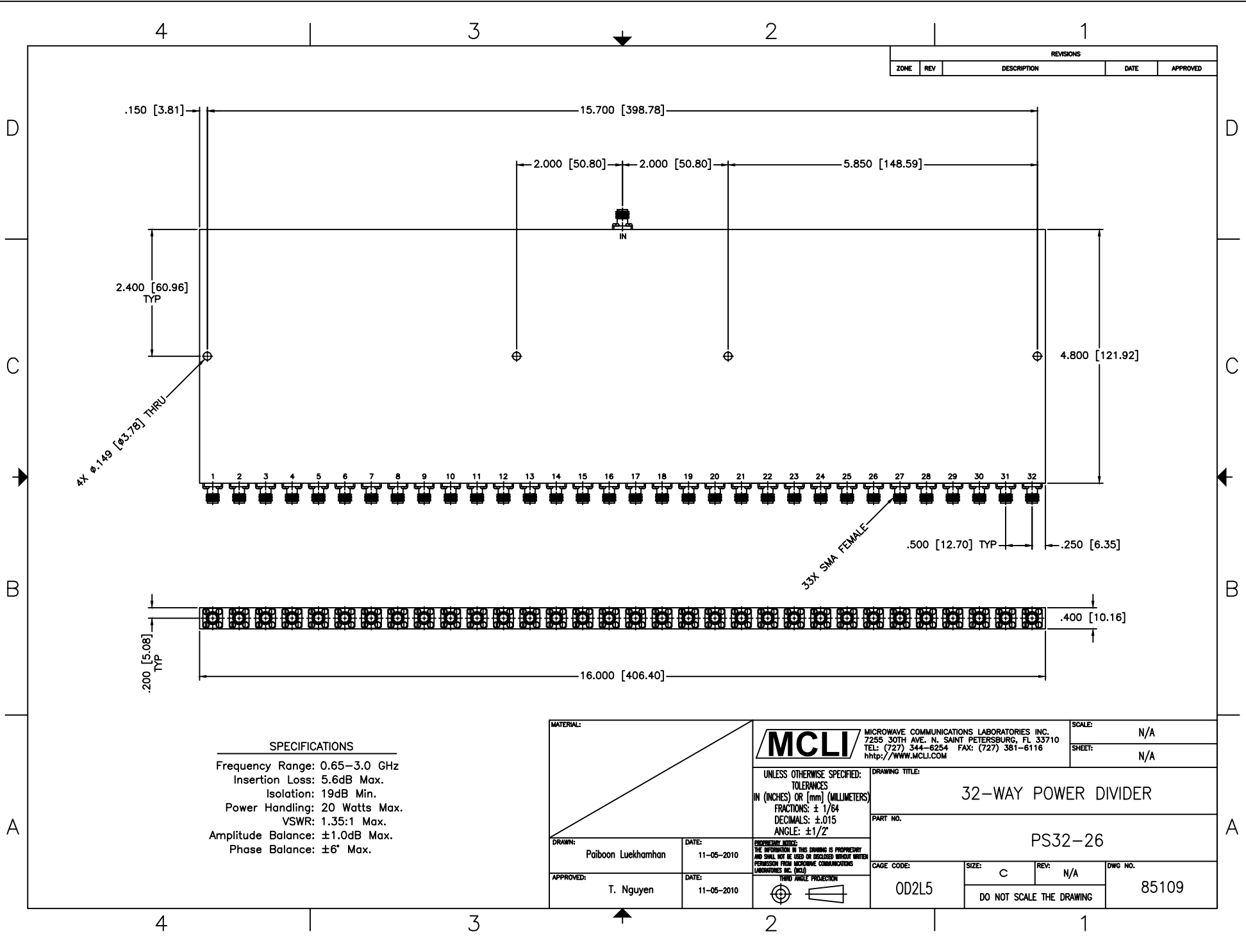


| REVISIONS |     |             |      |          |
|-----------|-----|-------------|------|----------|
| ZONE      | REV | DESCRIPTION | DATE | APPROVED |
|           |     |             |      |          |



**SPECIFICATIONS**

Frequency Range: 0.65–3.0 GHz  
 Insertion Loss: 5.6dB Max.  
 Isolation: 19dB Min.  
 Power Handling: 20 Watts Max.  
 VSWR: 1.35:1 Max.  
 Amplitude Balance: ±1.0dB Max.  
 Phase Balance: ±6° Max.

|   |                     |  |             |                  |
|---|---------------------|--|-------------|------------------|
| MATERIAL:   |                     | <br><b>MCLI</b> MICROWAVE COMMUNICATIONS LABORATORIES INC.<br>7255 30TH AVE. N. SAINT PETERSBURG, FL 33710<br>TEL: (727) 344-6254 FAX: (727) 381-6116<br>http://www.MCLI.COM | SCALE:      | N/A              |
|   |                     |  | SHEET:      | N/A              |
| UNLESS OTHERWISE SPECIFIED:<br>TOLERANCES<br>IN (INCHES) OR [mm] (MILLIMETERS)<br>FRACTIONS: ± 1/64<br>DECIMALS: ± 0.015<br>ANGLE: ± 1/2° |                     | DRAWING TITLE:<br><b>32-WAY POWER DIVIDER</b>  |             |                  |
| DRAWN:<br>Paiboon Luekhamhan  |                     | PART NO.<br><b>PS32-26</b>   |             |                  |
| DATE:<br>11-05-2010   | DATE:<br>11-05-2010 | CAGE CODE:<br>OD2L5  |             |                  |
| APPROVED:<br>T. Nguyen  | DATE:<br>11-05-2010 | SIZE:<br>C   | REV:<br>N/A | DWG NO.<br>85109 |
| THIRD ANGLE PROJECTION  |                     | DO NOT SCALE THE DRAWING   |             |                  |