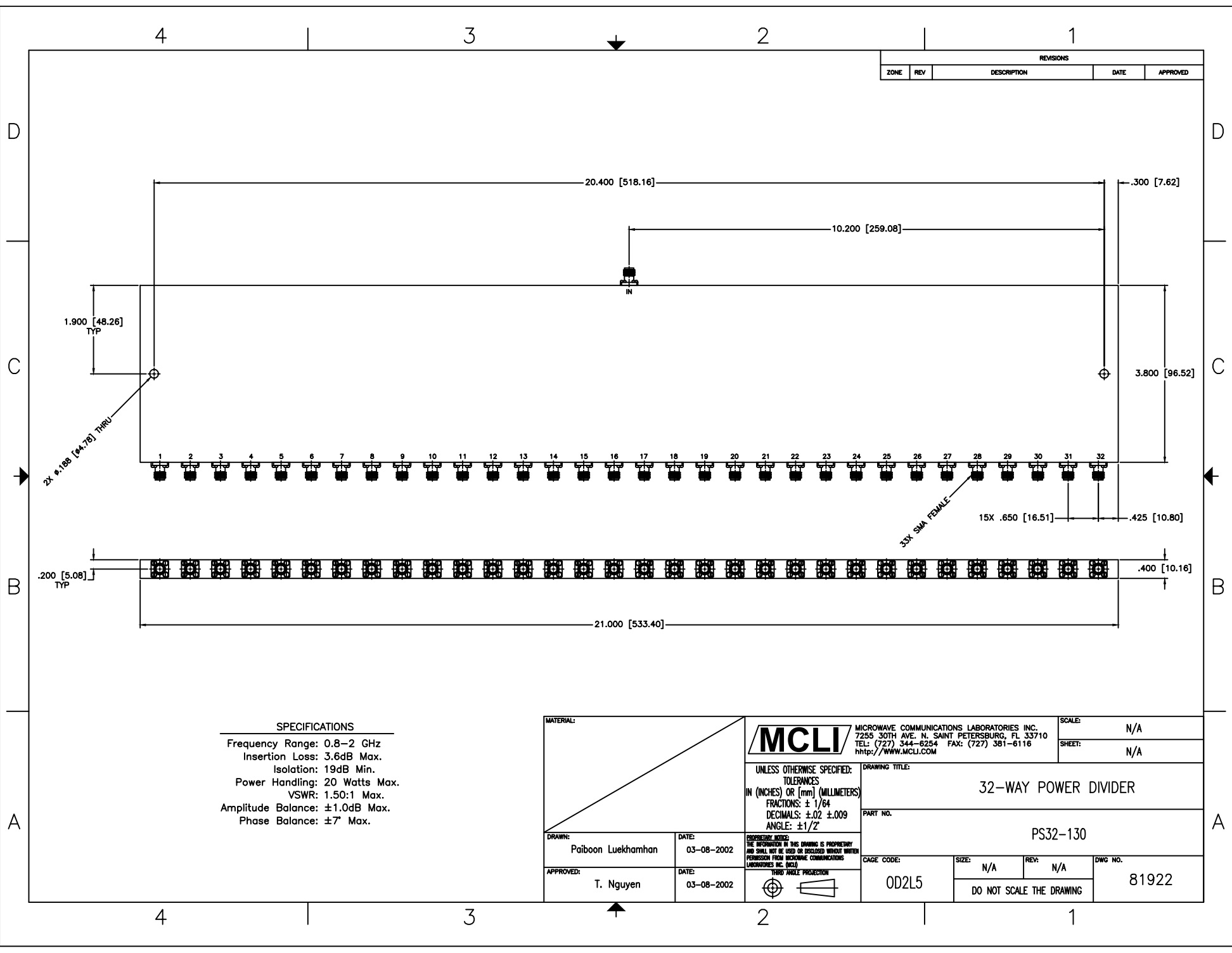


REVISIONS				
ZONE	REV	DESCRIPTION	DATE	APPROVED



SPECIFICATIONS

Frequency Range: 0.8–2 GHz
 Insertion Loss: 3.6dB Max.
 Isolation: 19dB Min.
 Power Handling: 20 Watts Max.
 VSWR: 1.50:1 Max.
 Amplitude Balance: ± 1.0 dB Max.
 Phase Balance: $\pm 7^\circ$ Max.

MATERIAL:		 MCLI MICROWAVE COMMUNICATIONS LABORATORIES INC. 7255 30TH AVE. N. SAINT PETERSBURG, FL 33710 TEL: (727) 344-6254 FAX: (727) 381-6116 http://WWW.MCLI.COM	SCALE:	N/A	
UNLESS OTHERWISE SPECIFIED: TOLERANCES IN (INCHES) OR [mm] (MILLIMETERS) FRACTIONS: $\pm 1/64$ DECIMALS: $\pm 0.02 \pm 0.009$ ANGLE: $\pm 1/2^\circ$			DRAWING TITLE:	32-WAY POWER DIVIDER	
DRAWN: Paiboon Luekhamhan DATE: 03-08-2002		PROPRIETARY NOTICE: THE INFORMATION IN THIS DRAWING IS PROPRIETARY AND SHALL NOT BE USED OR DISCLOSED WITHOUT WRITTEN PERMISSION FROM MICROWAVE COMMUNICATIONS LABORATORIES INC. (MCLI)	PART NO.:	PS32-130	
APPROVED: T. Nguyen DATE: 03-08-2002		THIRD ANGLE PROJECTION 	CAGE CODE:	0D2L5	
		SIZE:	N/A	REV:	N/A
		DO NOT SCALE THE DRAWING		DWG NO.:	81922