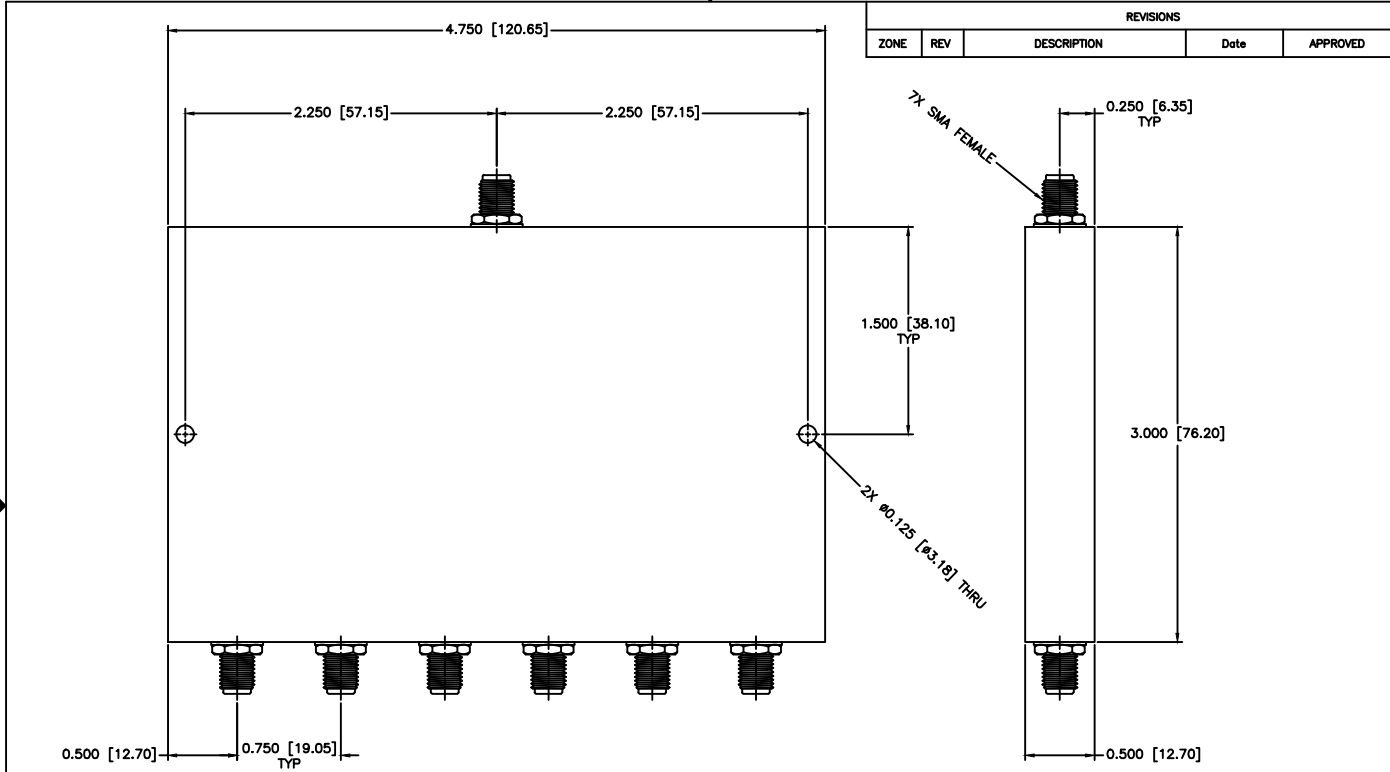


REVISIONS				
ZONE	REV	DESCRIPTION	Date	APPROVED



SPECIFICATIONS

- Frequency Range: 10–500 MHz
- Isolation: 22dB Min.
- Insertion Loss: 2.0dB Max.
- Amplitude Balance: ±0.4dB Max.
- Phase Balance: ±5dB Max.
- VSWR: 1.50:1 Max.
- Power: 1W Max. © Load vswr 1.2

MATERIAL:	
DRAWN:	DATE:
Paiboon Luethamhan	06-10-2014
APPROVED:	DATE:
T. Nguyen	06-10-2014

	MICROWAVE COMMUNICATIONS LABORATORIES INC. 7255 30TH AVE. N. SAINT PETERSBURG, FL 33710 TEL: (727) 344-8254 FAX: (727) 381-8118 RINGUP/WWW.MCL.COM	SCALE:	N/A
	UNLESS OTHERWISE SPECIFIED: DIMENSIONS: DECIMALS IN (INCHES) OR (mm) (MILLIMETERS) FRACTIONS: ± 1/64 DECIMALS: ±0.01 ±0.005 ANGLE: ±1/2°	DRAWING TITLE:	6-WAY POWER DIVIDERS
DISCREPANCY NOTICE: THE DIMENSIONS OF THE PARTS IN THIS DRAWING ARE SHOWN AS DIMENSIONS OF THE PARTS AS SUPPLIED BY THE MANUFACTURER AND SHALL NOT BE USED AS DIMENSIONS OF THE PARTS AS SUPPLIED BY THE MANUFACTURER UNLESS OTHERWISE SPECIFIED IN THIS DRAWING.	PART NO.:	PL6-2	
THIS FILE PROTECTS	CAGE CODE:	SIZE:	N/A
	0D2L5	REV:	A
		DO NOT SCALE THE DRAWING	
		DWG NO.:	80214