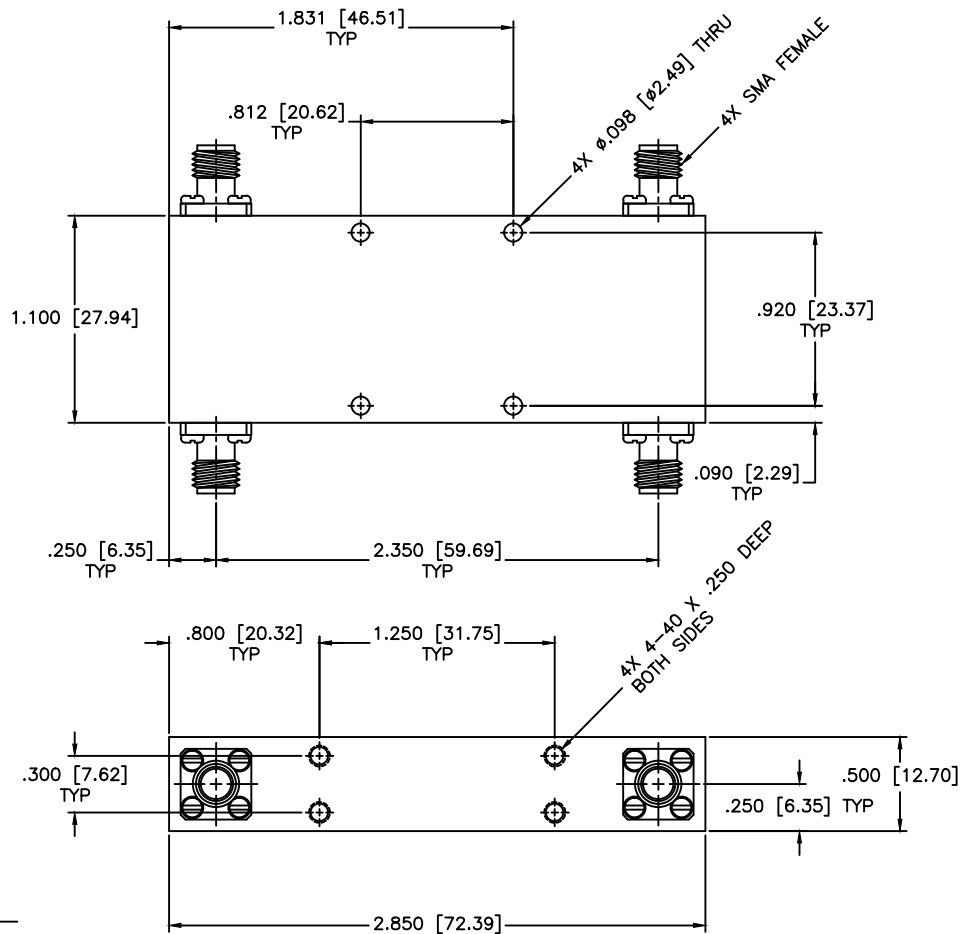


REVISIONS				
ZONE	REV	DESCRIPTION	Date	APPROVED



**SPECIFICATIONS**

Frequency Range: 2–18 GHz  
 VSWR: 1.35:1 Max.  
 Insertion Loss: 1.3dB Max.  
 Isolation: 17dB Min.  
 Phase Balance:  $\pm 7^\circ$  Deg.  
 Amplitude Balance:  $\pm 0.4$ dB Max.  
 Power Avg: 20W Max.  
 Power Peak: 3kW Max.  
 Operating Temperature:  $-32^\circ\text{C}$  to  $+85^\circ\text{C}$

MATERIAL:	
DRAWN: Paiboon Luekhamhan	DATE: 01-26-2011
APPROVED: T. Nguyen	DATE: 01-26-2011

**MCLI** MICROWAVE COMMUNICATIONS LABORATORIES INC.  
 7255 30TH AVE. N. SAINT PETERSBURG, FL 33710  
 TEL: (727) 344-6254 FAX: (727) 381-6116  
 http://WWW.MCLI.COM

UNLESS OTHERWISE SPECIFIED:  
 TOLERANCES  
 IN (INCHES) OR [mm] (MILLIMETERS)  
 FRACTIONS:  $\pm 1/64$   
 DECIMALS:  $\pm 0.01 \pm 0.005$   
 ANGLE:  $\pm 1/2^\circ$

PROPRIETARY NOTICE:  
 THE INFORMATION IN THIS DRAWING IS PROPRIETARY  
 AND SHALL NOT BE USED OR DISCLOSED WITHOUT WRITTEN  
 PERMISSION FROM MICROWAVE COMMUNICATIONS  
 LABORATORIES INC. (MCLI)

THIRD ANGLE PROJECTION

SCALE:	N/A		
SHEET:	N/A		
DRAWING TITLE:	90° HYBRID		
PART NO.:	HB-9		
CAGE CODE:	SIZE:	REV:	DWG. NO.:
OD2L5	N/A	N/A	82401
DO NOT SCALE THE DRAWING			