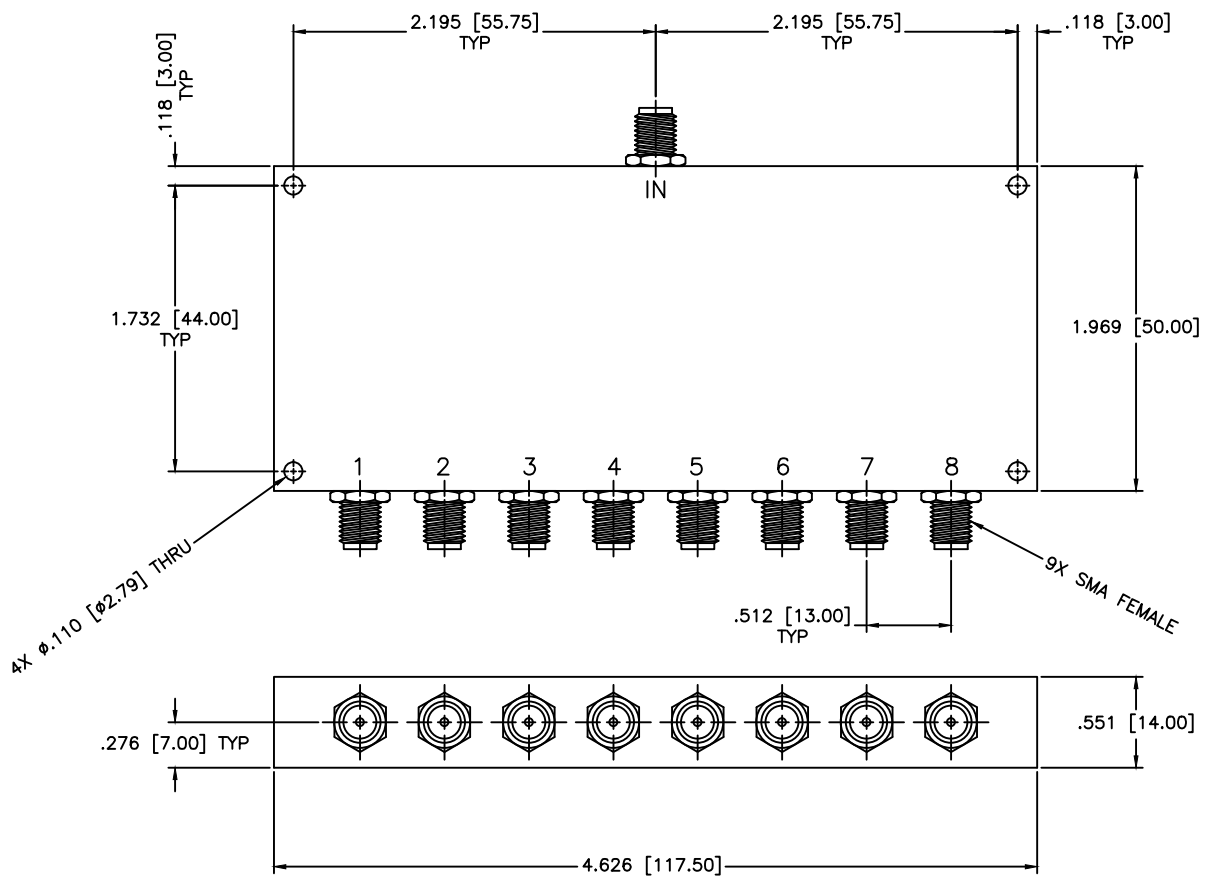


REVISIONS				
ZONE	REV	DESCRIPTION	DATE	APPROVED



SPECIFICATIONS

Frequency Range: 100–1300 MHz
 Insertion Loss: 13dB MAX.
 Isolation: 18dB MIN.
 VSWR: 1.50:1 MAX.
 Forward Power (CW): 1 Watt MAX.
 Amplitude Balance: ±2 MAX.
 Phase Balance: ±10 Deg. MAX.
 Impedance: 50 Ohms

MATERIAL:			MICROWAVE COMMUNICATIONS LABORATORIES INC. 7255 30TH AVE. N. SAINT PETERSBURG, FL 33710 TEL: (727) 344-6254 FAX: (727) 381-6116 http://WWW.MCLI.COM		SCALE:	N/A
			UNLESS OTHERWISE SPECIFIED: TOLERANCES IN (INCHES) OR [mm] (MILLIMETERS) FRACTIONS: ± 1/64 DECIMALS: ±.01 ±.005 ANGLE: ±1/2°		DRAWING TITLE:	8-WAY LUMPED ELEMENT POWER DIVIDER
DRAWN:		DATE:		PART NO.		
Paiboon Luekhamhan		02-09-2010		PL8-20		
APPROVED:		DATE:		CAGE CODE:	SIZE:	REV:
T. Nguyen		02-09-2010		OD2L5	N/A	N/A
		PROPRIETARY NOTICE: THE INFORMATION IN THIS DRAWING IS PROPRIETARY AND SHALL NOT BE USED OR DISCLOSED WITHOUT WRITTEN PERMISSION FROM MICROWAVE COMMUNICATIONS LABORATORIES INC. (MCLI)		DO NOT SCALE THE DRAWING		DWG NO.
		THIRD ANGLE PROJECTION 				84682