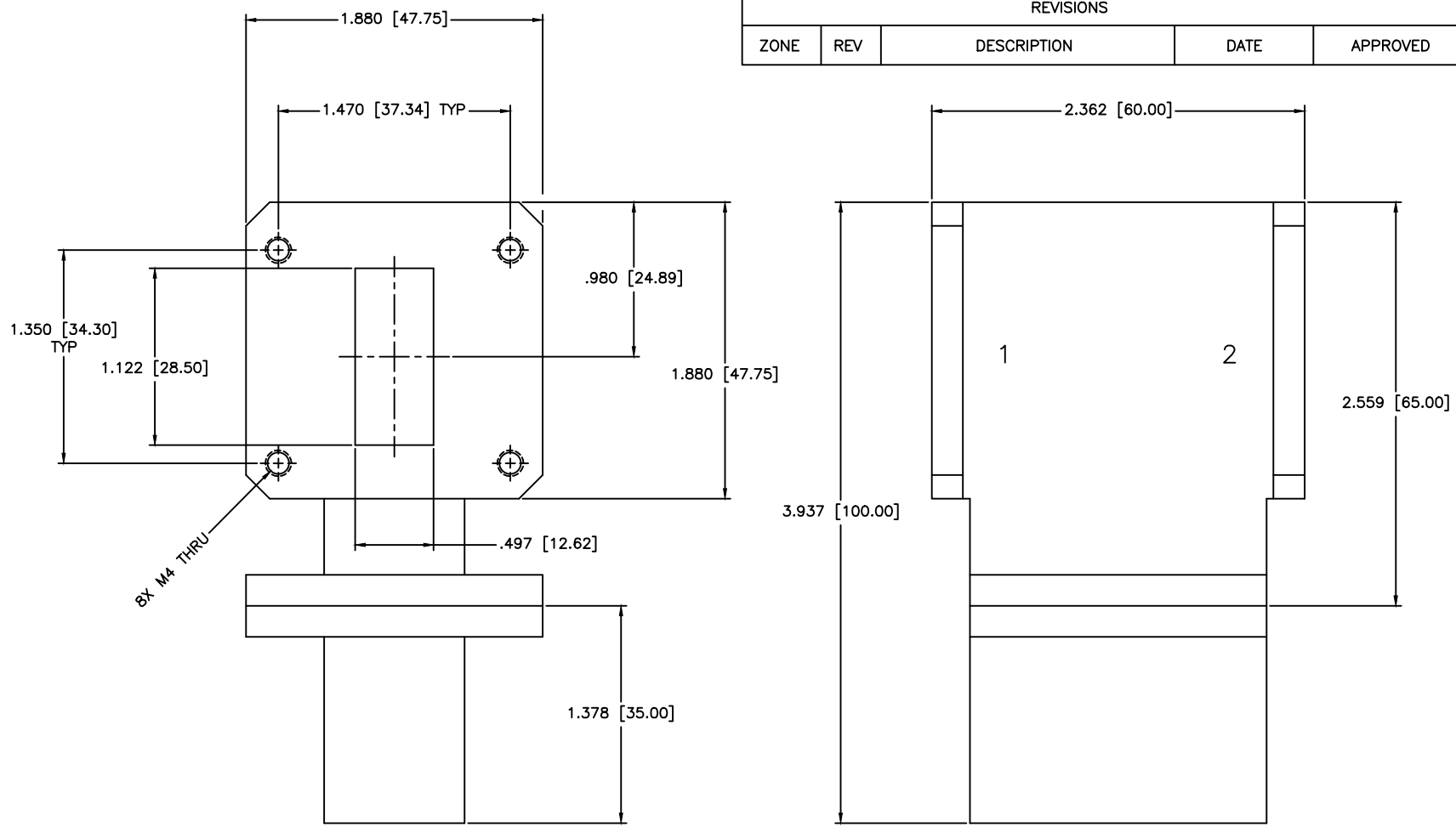


REVISIONS				
ZONE	REV	DESCRIPTION	DATE	APPROVED



8X M4 THRU

**SPECIFICATIONS**

FREQUENCY RANGE: 7.8–8.5 GHz  
 EIA DESIGN (1–2): WR112  
 VSWR: 1.15:1 Max.  
 INSERTION LOSS: 0.20dB Max.  
 ISOLATION: 23dB Max.  
 AVERAGE POWER: 10W, 500W Peak  
 OPERATING TEMPERATURE: –30°C to +70°C

MATERIAL:			MICROWAVE COMMUNICATIONS LABORATORIES INC. 7255 30TH AVE. N. SAINT PETERSBURG, FL 33710 TEL: (727) 344-6254 FAX: (727) 381-6116 http://WWW.MCLI.COM		SCALE:	N/A	
UNLESS OTHERWISE SPECIFIED: TOLERANCES IN (INCHES) OR [mm] (MILLIMETERS) FRACTIONS: ± 1/64 DECIMALS: ±.01 ±.005 ANGLE: ±1/2°			DRAWING TITLE:		SHEET:		N/A
DRAWN: Paiboon Luexhamhan		DATE: 02-16-2011		WR112 WAVEGUIDE ISOLATOR			
APPROVED: T. Nguyen		DATE: 02-16-2011		PART NO. ISW-2			
PROPRIETARY NOTICE: THE INFORMATION IN THIS DRAWING IS PROPRIETARY AND SHALL NOT BE USED OR DISCLOSED WITHOUT WRITTEN PERMISSION FROM MICROWAVE COMMUNICATIONS LABORATORIES INC. (MCLI)		THIRD ANGLE PROJECTION 		CAGE CODE:	SIZE:	REV:	DWG NO.
				OD2L5	A	N/A	85532
DO NOT SCALE THE DRAWING							