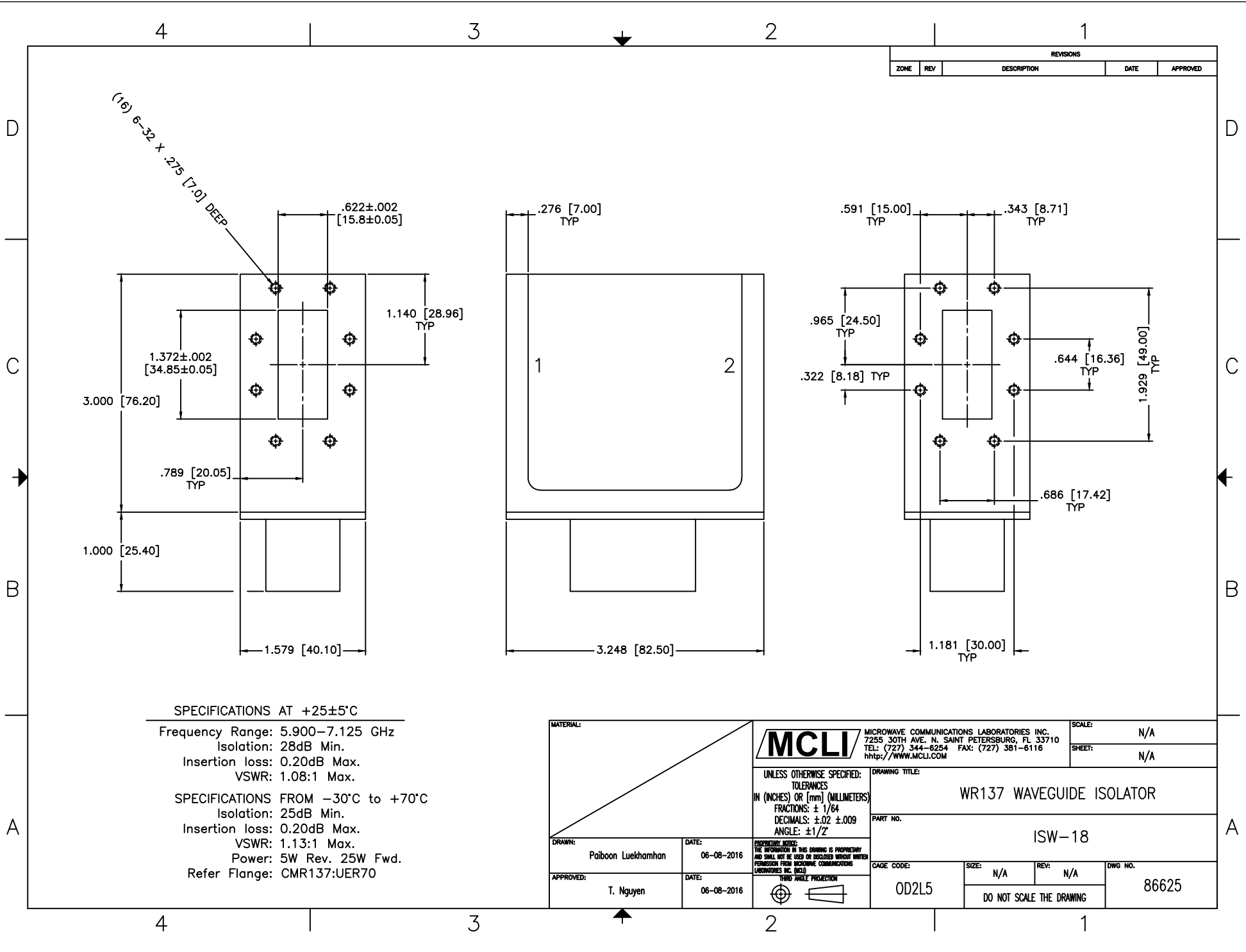


REVISIONS				
ZONE	REV	DESCRIPTION	DATE	APPROVED



SPECIFICATIONS AT +25±5°C

Frequency Range: 5.900–7.125 GHz
 Isolation: 28dB Min.
 Insertion loss: 0.20dB Max.
 VSWR: 1.08:1 Max.

SPECIFICATIONS FROM –30°C to +70°C

Isolation: 25dB Min.
 Insertion loss: 0.20dB Max.
 VSWR: 1.13:1 Max.
 Power: 5W Rev. 25W Fwd.
 Refer Flange: CMR137:UER70

MATERIAL:		 MCLI MICROWAVE COMMUNICATIONS LABORATORIES INC. 7255 30TH AVE. N. SAINT PETERSBURG, FL 33710 TEL: (727) 344-6254 FAX: (727) 381-6116 http://WWW.MCLI.COM	SCALE:	N/A
			SHEET:	N/A
		UNLESS OTHERWISE SPECIFIED: TOLERANCES IN (INCHES) OR [mm] (MILLIMETERS) FRACTIONS: ± 1/64 DECIMALS: ±.02 ±.009 ANGLE: ±1/2°	DRAWING TITLE: WR137 WAVEGUIDE ISOLATOR	
		PROPRIETARY NOTICE: THE INFORMATION IN THIS DRAWING IS PROPRIETARY AND SHALL NOT BE USED OR DISCLOSED WITHOUT WRITTEN PERMISSION FROM MICROWAVE COMMUNICATIONS LABORATORIES INC. (MCLI)	PART NO.: ISW-18	
DRAWN: Paiboon Luekhamhan	DATE: 06-08-2016	 THIRD ANGLE PROJECTION	CAGE CODE:	OD2L5
APPROVED: T. Nguyen	DATE: 06-08-2016		SIZE:	N/A
		REV:	N/A	DWG NO.:
		DO NOT SCALE THE DRAWING		86625