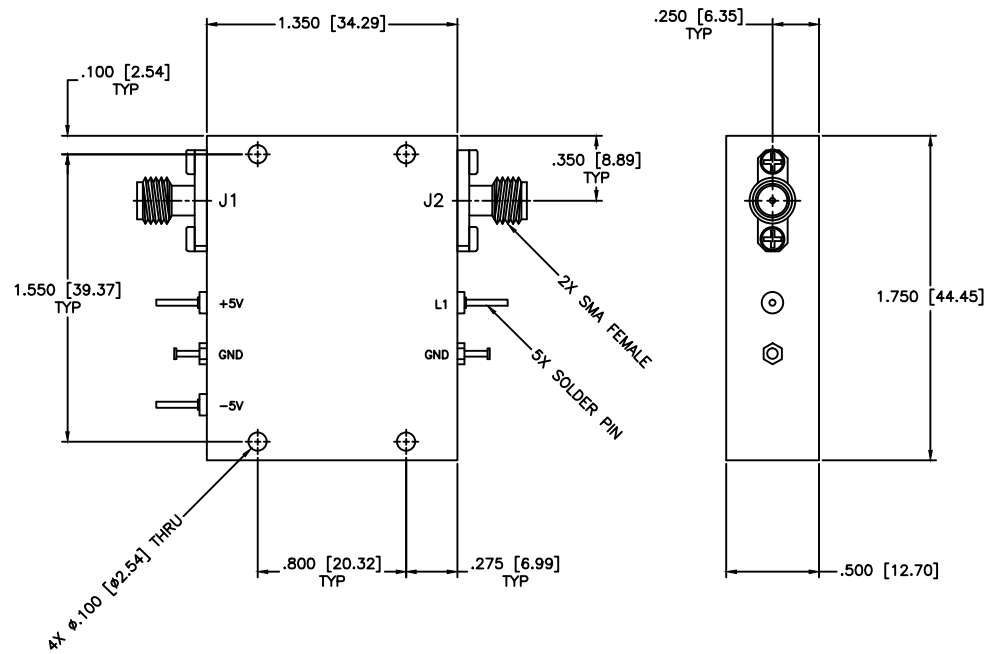


REVISIONS				
ZONE	REV	DESCRIPTION	Date	APPROVED



SPECIFICATIONS

Frequency Range: 7.25–8.4 GHz
 Switch Type: SP1T
 Isolation: 60dB min
 Insertion Loss: 1.7dB max
 VSWR: 1.60:1 Max.
 Input Power: 200mW (23dBm)
 Switching Time: 100 (nSec)
 Driver: Schottkey TTL
 Voltage/Current Required: ±5 Vdc @ ±30 mA, Typical
 Individual TTL Control Logic: Logic "0" (-0.3V to +0.8V) = ON
 Logic "1" (+2.0V to +5.0V) = OFF
 TTL Control Logic
 L1 J1–J2
 0 Insertion Loss
 1 Isolation

MATERIAL:			MICROWAVE COMMUNICATIONS LABORATORIES INC. 7255 30TH AVE. N. SAINT PETERSBURG, FL 33710 TEL: (727) 344-6254 FAX: (727) 381-6116 http://www.MCLI.COM		SCALE: N/A
UNLESS OTHERWISE SPECIFIED: TOLERANCES IN (INCHES) OR [mm] (MILLIMETERS) FRACTIONS: ± 1/64 DECIMALS: ±.01 ±.005 ANGLE: ±1/2°			DRAWING TITLE: PIN DIODE SWITCHES, REFLECTIVE		SHEET: N/A
DRAWN: Paiboon Luekhamhan		DATE: 08-27-2013		PART NO. D1-42/REF	
APPROVED: T. Nguyen		DATE: 08-27-2013		CAGE CODE: OD2L5	SIZE: A REV: N/A DWG NO.: 86362 DO NOT SCALE THE DRAWING

