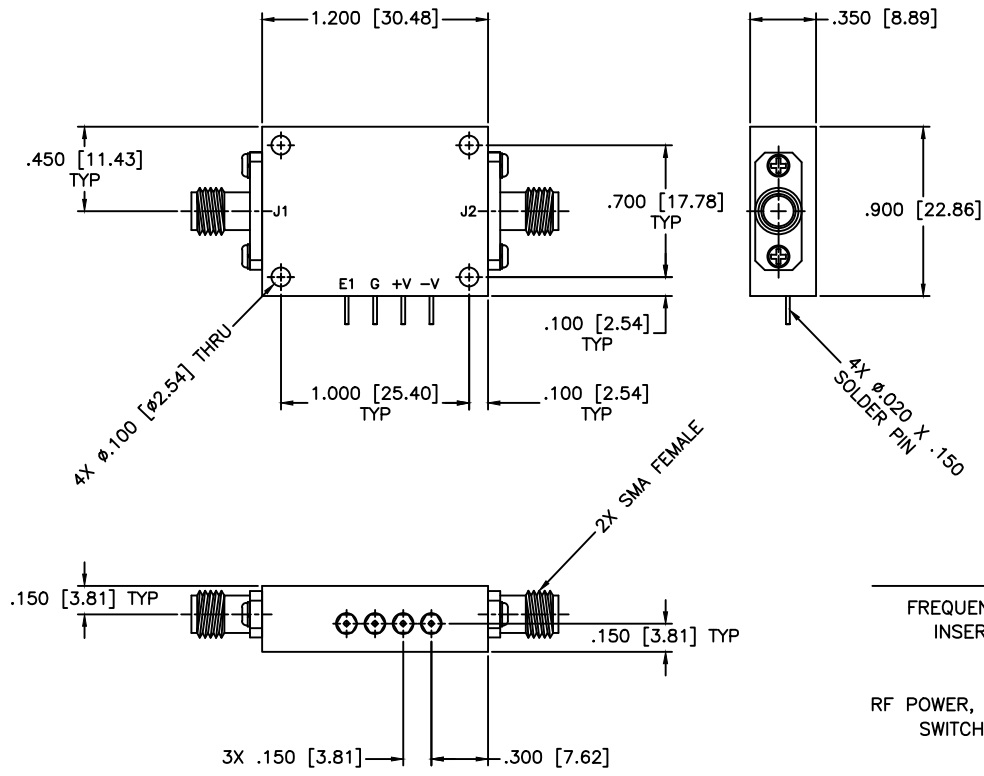


REVISIONS				
ZONE	REV	DESCRIPTION	Date	APPROVED



SPECIFICATIONS	
FREQUENCY RANGE:	18–26.5 GHz
INSERTION LOSS:	4.2dB Max.
ISOLATION:	60dB Min.
VSWR:	2.65:1 Max.
RF POWER, OPERATING:	500mW CW Typ.
SWITCHING SPEED:	100nSec Max.

OPERATING TEMPERATURE: -40°C to +85°C
 STORAGE TEMPERATURE: -55°C to +125°C
 DC BIAS:
 +5V @ 55 mA MAX.
 -15V @ 55 mA MAX.
 CONTROL:
 TTL 0 = LOW LOSS
 TTL 1 = ISOLATION

MATERIAL:		MCLI MICROWAVE COMMUNICATIONS LABORATORIES INC. 7255 30TH AVE. N. SAINT PETERSBURG, FL 33710 TEL: (727) 344-6254 FAX: (727) 381-6116 http://WWW.MCLI.COM	SCALE:	N/A
			SHEET:	N/A
UNLESS OTHERWISE SPECIFIED: TOLERANCES IN (INCHES) OR [mm] (MILLIMETERS) FRACTIONS: $\pm 1/64$ DECIMALS: $\pm .02 \pm .008$ ANGLE: $\pm 1/2^\circ$		DRAWING TITLE: PIN DIODE SWITCHES, ABSORPTIVE		
DRAWN: Paiboon Luekhamhan		PART NO. D1-18/ABS		
DATE: 12-03-2014		CAGE CODE: OD2L5		
APPROVED: T. Nguyen		SIZE: A		REV: N/A
DATE: 12-03-2014		DO NOT SCALE THE DRAWING		DWG NO. 83034
<small>PROPRIETARY NOTICE: THE INFORMATION IN THIS DRAWING IS PROPRIETARY AND SHALL NOT BE USED OR DISCLOSED WITHOUT WRITTEN PERMISSION FROM MICROWAVE COMMUNICATIONS LABORATORIES INC. (MCLI)</small>				