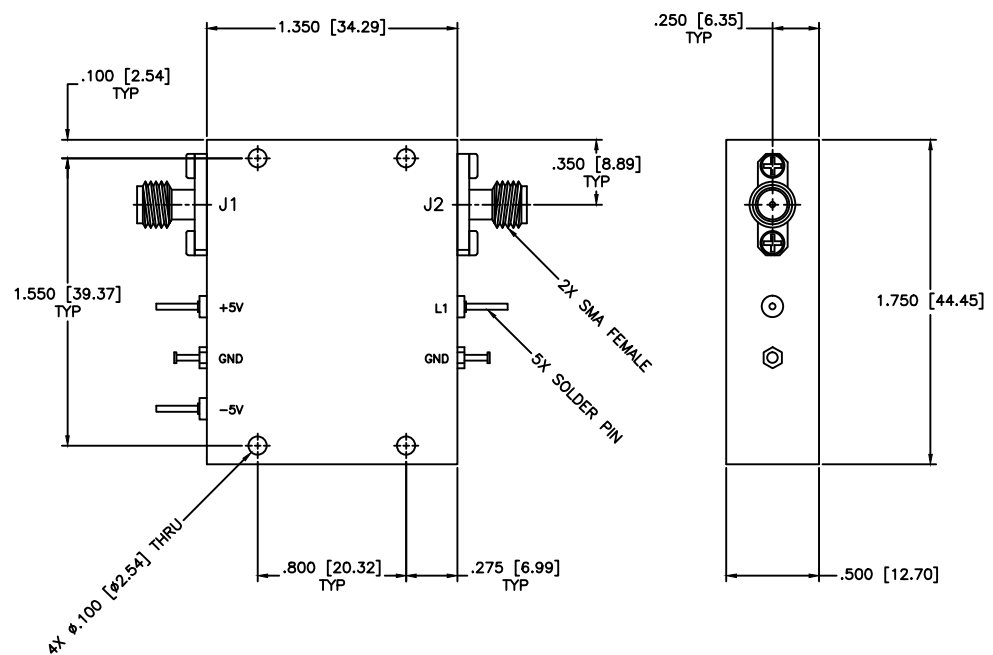


REVISIONS				
ZONE	REV	DESCRIPTION	Date	APPROVED



**SPECIFICATIONS**

Frequency Range: 8.0–12.4 GHz  
 Switch Type: SP1T  
 Isolation: 60dB min  
 Insertion Loss: 1.6dB max  
 VSWR: 1.60:1 Max.  
 Input Power: 200mW (23dBm)  
 Switching Time: 100 (nSec)  
 Driver: Schottkey TTL  
 Voltage/Current Required: ±5 Vdc @ ±30 mA, Typical  
 Individual TTL Control Logic:  
 Logic "0" (-0.3V to +0.8V) = ON  
 Logic "1" (+2.0V to +5.0V) = OFF

**TTL Control Logic**  
 L1 J1–J2  
 0 Insertion Loss  
 1 Isolation

MATERIAL:			MICROWAVE COMMUNICATIONS LABORATORIES INC. 7255 30TH AVE. N. SAINT PETERSBURG, FL 33710 TEL: (727) 344-6254 FAX: (727) 381-6116 http://www.MCLI.COM		SCALE: N/A
UNLESS OTHERWISE SPECIFIED: TOLERANCES IN (INCHES) OR [mm] (MILLIMETERS) FRACTIONS: ± 1/64 DECIMALS: ±.02 ±.008 ANGLE: ±1/2°			DRAWING TITLE: <b>PIN DIODE SWITCHES, REFLECTIVE</b>		SHEET: N/A
DRAWN: Paiboon Luekhamhan		DATE: 08-27-2013		PART NO. <b>D1-15/REF</b>	
APPROVED: T. Nguyen		DATE: 08-27-2013		CAGE CODE: OD2L5	SIZE: A REV: N/A DWG NO.: 86504
PROPRIETARY NOTICE: THE INFORMATION ON THIS DRAWING IS PROPRIETARY AND SHALL NOT BE USED OR DISCLOSED WITHOUT WRITTEN PERMISSION FROM MICROWAVE COMMUNICATIONS LABORATORIES INC. (MCLI)				DO NOT SCALE THE DRAWING	