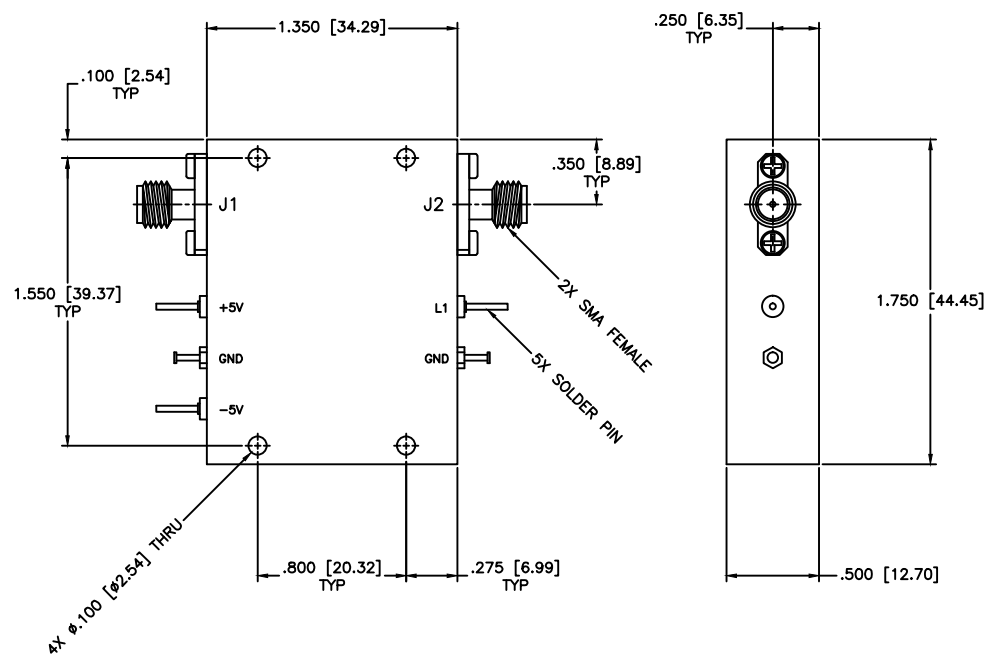


REVISIONS				
ZONE	REV	DESCRIPTION	Date	APPROVED



SPECIFICATIONS

Frequency Range: 4–8 GHz
 Switch Type: SP1T
 Isolation: 60dB min
 Insertion Loss: 1.0dB max
 VSWR: 1.50:1 Max.
 Input Power: 200mW (23dBm)
 Switching Time: 100 (nSec)
 Driver: Schottkey TTL
 Voltage/Current Required: ±5 Vdc @ ±30 mA, Typical
 Individual TTL Control Logic:
 Logic "0" (-0.3V to +0.8V) = ON
 Logic "1" (+2.0V to +5.0V) = OFF

TTL Control Logic

L1	J1–J2
0	Insertion Loss
1	Isolation

MATERIAL:			MICROWAVE COMMUNICATIONS LABORATORIES INC. 7255 30TH AVE. N. SAINT PETERSBURG, FL 33710 TEL: (727) 344-6254 FAX: (727) 381-6116 http://www.MCLI.COM		SCALE: N/A
UNLESS OTHERWISE SPECIFIED: TOLERANCES IN (INCHES) OR [mm] (MILLIMETERS) FRACTIONS: ± 1/64 DECIMALS: ±.01 ±.005 ANGLE: ±1/2°			DRAWING TITLE: PIN DIODE SWITCHES, REFLECTIVE		SHEET: N/A
DRAWN: Paiboon Luekhamhan		DATE: 08-27-2013		PART NO. D1-11/REF	
APPROVED: T. Nguyen		DATE: 08-27-2013		CAGE CODE: OD2L5	SIZE: A
PROPRIETARY NOTICE: THE INFORMATION ON THIS DRAWING IS PROPRIETARY AND SHALL NOT BE USED OR DISCLOSED WITHOUT WRITTEN PERMISSION FROM MICROWAVE COMMUNICATIONS LABORATORIES INC. (MCLI)		THIRD ANGLE PROJECTION		REV: N/A	DWG NO. 86358
DO NOT SCALE THE DRAWING					