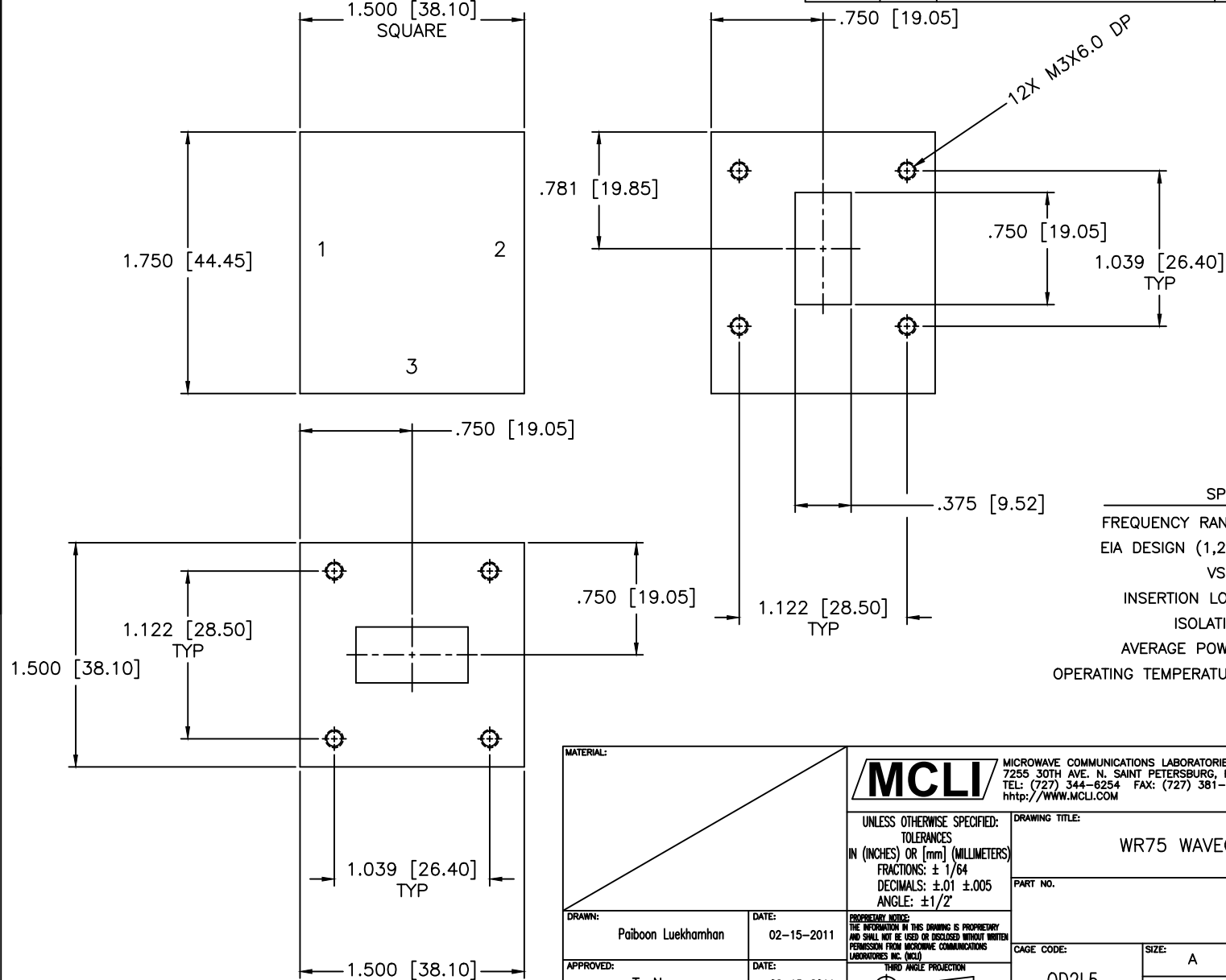


REVISIONS				
ZONE	REV	DESCRIPTION	DATE	APPROVED



**SPECIFICATIONS**

FREQUENCY RANGE: 10.7–11.7 GHz  
 EIA DESIGN (1,2,3): WR75  
 VSWR: 1.20:1 Max.  
 INSERTION LOSS: 0.25dB Max.  
 ISOLATION: 21dB Min.  
 AVERAGE POWER: 100W, 500W Peak  
 OPERATING TEMPERATURE: -30°C to +70°C

MATERIAL:			MICROWAVE COMMUNICATIONS LABORATORIES INC. 7255 30TH AVE. N. SAINT PETERSBURG, FL 33710 TEL: (727) 344-6254 FAX: (727) 381-6116 http://WWW.MCLI.COM		SCALE:	N/A
					SHEET:	N/A
		UNLESS OTHERWISE SPECIFIED: TOLERANCES IN (INCHES) OR [mm] (MILLIMETERS) FRACTIONS: ± 1/64 DECIMALS: ±.01 ±.005 ANGLE: ±1/2°	DRAWING TITLE:			
		PROPRIETARY NOTICE: THE INFORMATION IN THIS DRAWING IS PROPRIETARY AND SHALL NOT BE USED OR DISCLOSED WITHOUT WRITTEN PERMISSION FROM MICROWAVE COMMUNICATIONS LABORATORIES INC. (MCLI)	WR75 WAVEGUIDE CIRCULATOR			
DRAWN:		DATE:	PART NO.			
Paiboon Luexhamhan		02-15-2011	CSW-7			
APPROVED:		DATE:	CAGE CODE:	SIZE:	REV:	DWG NO.
T. Nguyen		02-15-2011	OD2L5	A	N/A	85510
		 THIRD ANGLE PROJECTION	DO NOT SCALE THE DRAWING			