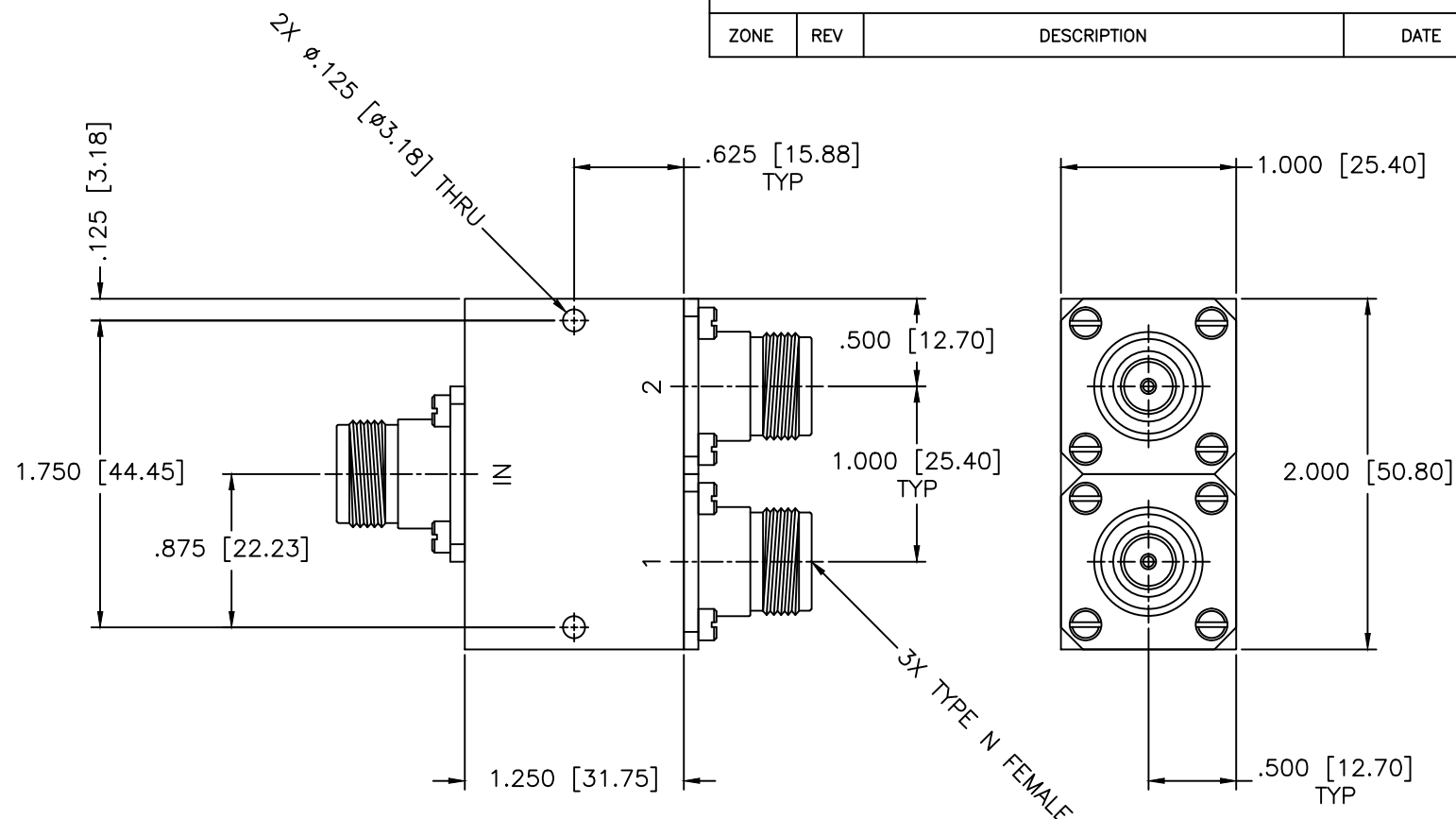


REVISIONS				
ZONE	REV	DESCRIPTION	DATE	APPROVED



SPECIFICATIONS

Frequency Range: 800–2400 MHz
 VSWR Input/Output: 1.50:1 Typ, 1.35:1 Max.
 Amplitude Unbalance: ± 0.1 Typ, ± 0.5 dB Max.
 Phase Unbalance: $\pm 2.0^\circ$ Typ, $\pm 4.0^\circ$ Max.
 Insertion Loss: 0.6dB Typ, 0.8dB Max.
 Isolation: 20dB Typ, 15dB Min.
 Power Rating: 30W CW
 Impedance: 50 Ohms
 Operating Temperature: -20°C to $+70^\circ\text{C}$

MATERIAL:	
DRAWN:	DATE:
Paiboon Luexhamhan	02-15-2017
APPROVED:	DATE:
T. Nguyen	02-15-2017

	MICROWAVE COMMUNICATIONS LABORATORIES INC. 7255 30TH AVE. N. SAINT PETERSBURG, FL 33710 TEL: (727) 344-6254 FAX: (727) 381-6116 http://WWW.MCLI.COM		SCALE:	N/A
	UNLESS OTHERWISE SPECIFIED: TOLERANCES IN (INCHES) OR [mm] (MILLIMETERS) FRACTIONS: $\pm 1/64$ DECIMALS: $\pm 0.01 \pm 0.05$ ANGLE: $\pm 1/2^\circ$		SHEET:	N/A
DRAWING TITLE:		2-WAY POWER DIVIDER/COMBINER		
PART NO.		PL2-46/NF		
CAGE CODE:	SIZE:	REV:	DWG NO.	
OD2L5	A	N/A	86673	
DO NOT SCALE THE DRAWING				